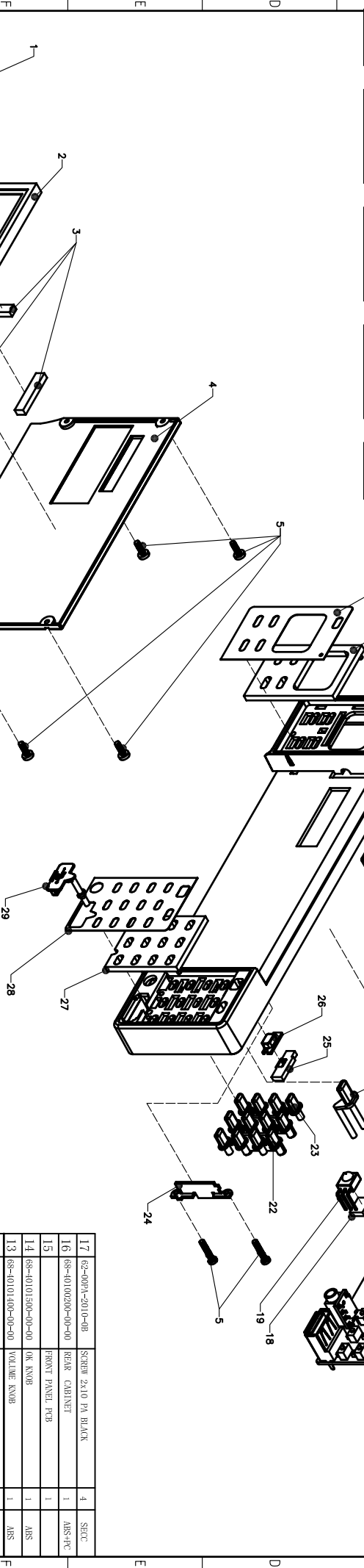
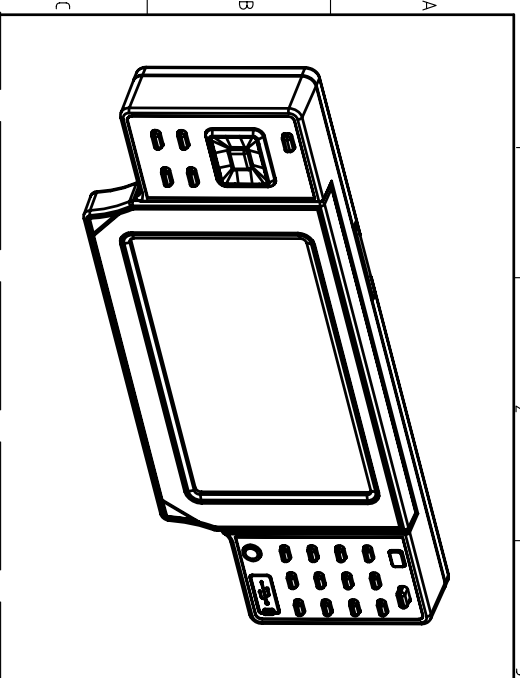


# SERVICE MANUAL

MODEL NO: KSD4300

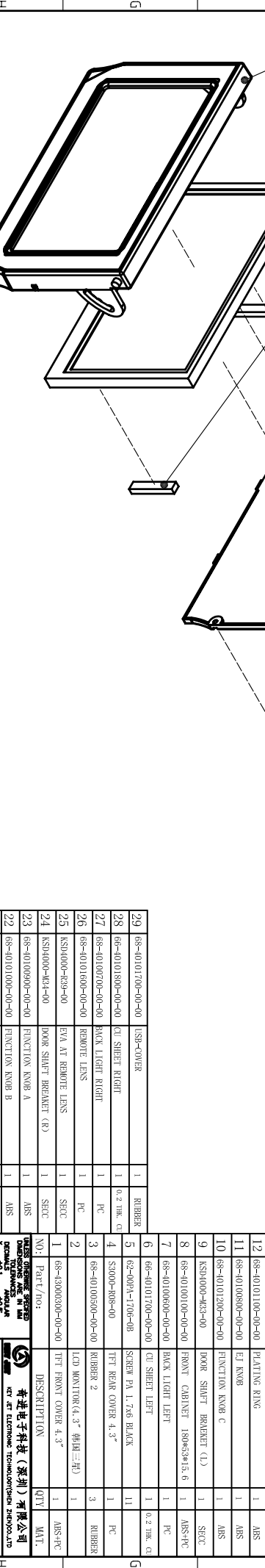


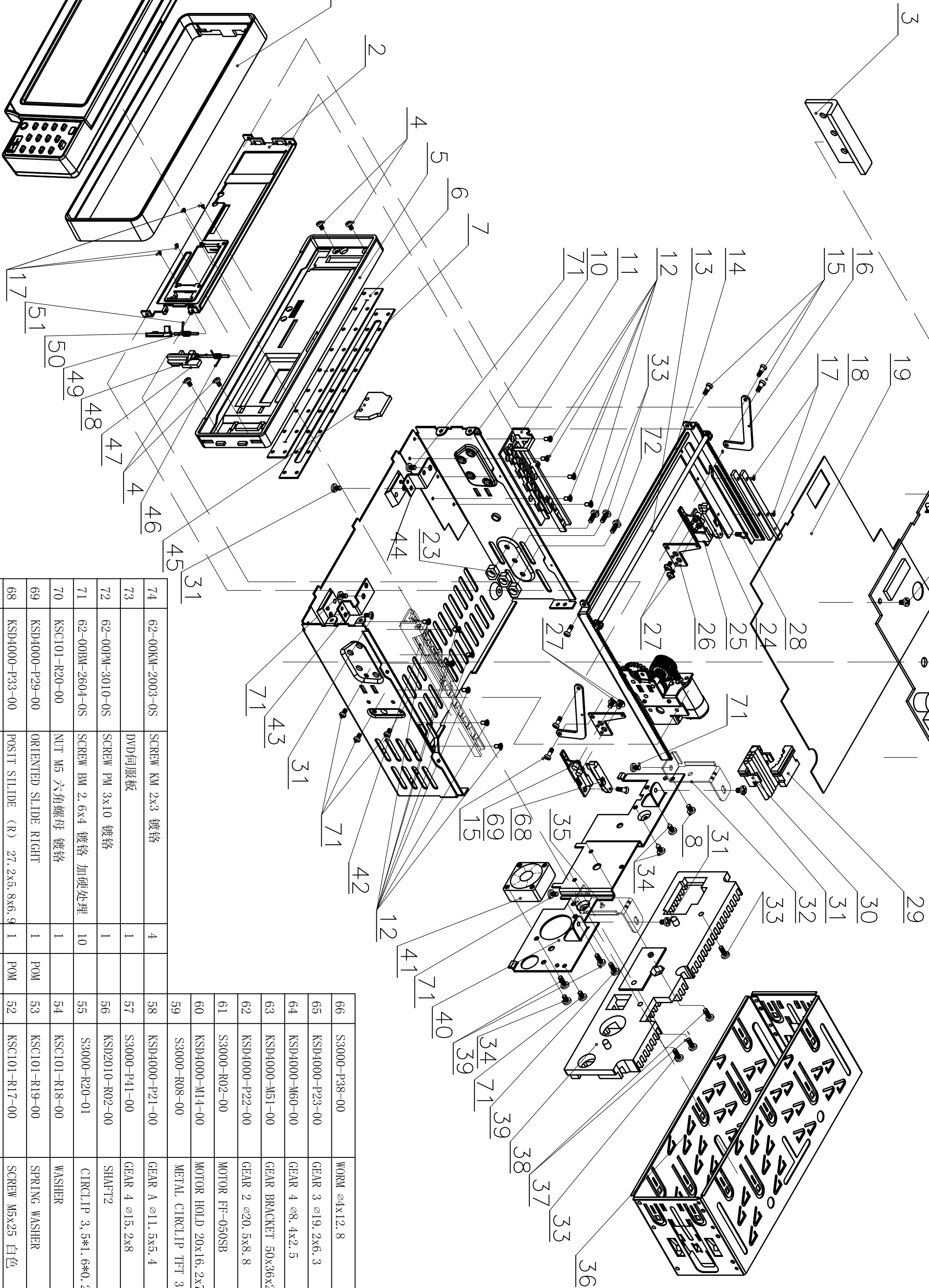
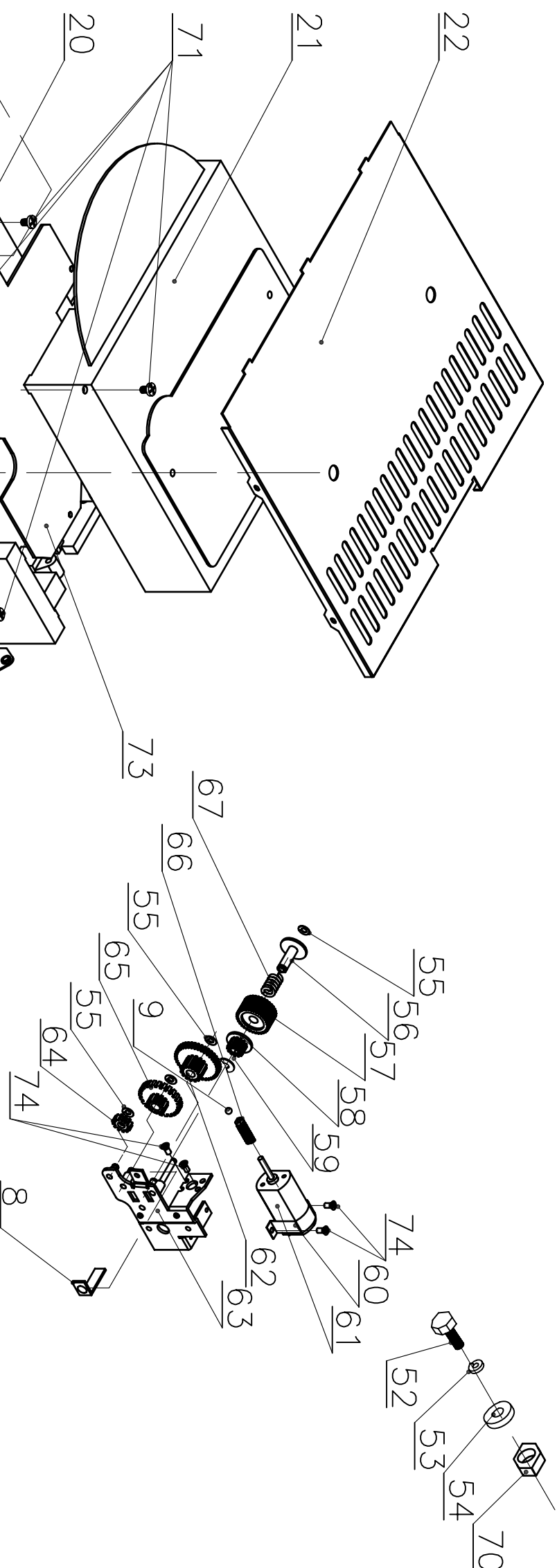
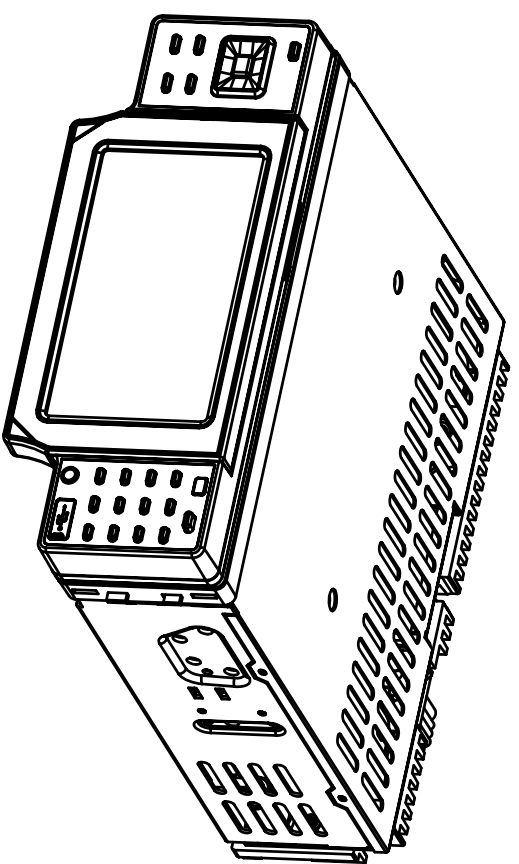


29	68-40101700-00-00	USB-COVER	1	1	RUBBER
28	68-40101800-00-00	CU SHEET RIGHT	1	0.2 THK. CU	
27	68-40100700-00-00	BACK LIGHT RIGHT	1	PC	
26	68-40101600-00-00	REMOTE LENS	1	PC	
25	KSD4000-R39-00	EVA AT REMOTE LENS	1	SECC	
24	KSD4000-R34-00	DOOR SHAFT BRACKET (R)	1	SECC	
23	68-40100900-00-00	FUNCTION KNOB A	1	ABS	
22	68-40101000-00-00	FUNCTION KNOB B	1	ABS	
21	68-40101300-00-00	OPEN KNOB	1	ABS	
20	KSD4000-R30-01	EJECT KNOB SPRING 22, 3x16	1		
19		SENSOR	1		
18	KSC101-R34-00	SPONGE 8x6x2	1		

17	62-000A-2010-08	SCREEN 25.10 PVA BLACK	4	SECC
16	68-40100200-00-00	REAR CABINET	1	ABS-PC
15		FRONT PANEL PCB	1	
14	68-40101500-00-00	OK KNOB	1	ABS
13	68-40101400-00-00	VOLUME KNOB	1	ABS
12	68-40101100-00-00	PLATING RING	1	ABS
11	68-40100800-00-00	EJ KNOB	1	ABS
10	68-40101200-00-00	FUNCTION KNOB C	1	ABS
9	KSD4000-R33-00	DOOR SHAFT BRACKET (L)	1	SECC
8	68-40100100-00-00	FRONT CABINET 180x53x15.6	1	ABS-PC
7	68-40100600-00-00	BACK LIGHT LEFT	1	PC
6	68-40101700-00-00	CU SHEET LEFT	1	0.2 THK. CU
5	62-000A-1700-08	SCREEN PA 1.756 BLACK	11	
4	S2000-R05-00	TFT REAR COVER 4.3"	1	PC
3	68-40100500-00-00	RUBBER 2	3	RUBBER
2	68-43000300-00-00	LCD MONITOR (4.3" 树脂三片)	1	
1	68-43000300-00-00	TFT FRONT COVER 4.3"	1	ABS-PC

NO.	Part/No.	DESCRIPTION	QTY	MAT.
TITLE:EXPLODE VIEW OF KSD4000 FRONT PANEL,ASS'Y				
DATE:08.03.28				
CHECK:CHEN				
DRAWN:CHEN				
DESIGN:CHEN				
P/N:				
MATERIAL:				
SCALE:1:1				
DO NOT SCALE DRAWING				
REV.:				
A2				



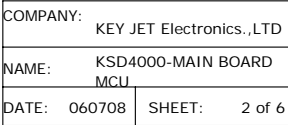


66	S3000-P38-00	WORM $\varnothing 4 \times 12.8$	1	POM	10	KSD4000-M01-01	BOTTOM CABINET 1/8, 2x159x30	1	SECC
65	KSD4000-P23-00	GEAR 3 $\varnothing 19, 2 \times 6, 3$	1	POM	9	KSC101-M56-00	STEEL BALL 2.0	1	
64	KSD4000-M60-00	GEAR 4 $\varnothing 8, 4 \times 2, 5$	1	POM	8	KSD-4000-M53-01	STEEL SHEET	1	
63	KSD4000-M51-00	GEAR BRACKET 50x36x24	1	SECC	7	KSC101-R26-00	PREVENT DUST PIECE 129X11	1	绒布
62	KSD4000-P22-00	GEAR 2 $\varnothing 20, 5 \times 8, 8$	1	POM	6	KSD4000-R43-00	PVC PLATE	1	PVC
61	S3000-R02-00	MOTOR FF-0505B	1		5	684000, 040, 04, 1020	BASE 183, 8x53x16, 8	1	ABS
60	KSD4000-M14-00	MOTOR HOLD 20x16, 2x7	1	SECC	4	62-00KM-2605-08	SCREW KM2, 6x5 KM 镀黑锌	4	
59	S3000-R08-00	METAL CIRCLIP TTT 3, 0x0, 5	1	碳钢	3	KSD-4000-M42-00	IC HEAT SINK	1	
					2	KSD4000-M57-11	SLIDE FRONT PANEL 159, 5x42, 1x10, 5	1	SECC
74	62-00KM-2003-0S	SCREW KM 2x3 镀铬	4		1	684000, 030, 00, 1020	OUTLINE BORDER 187, 2x59, 8x18	1	ABS
73		DVD伺服板	1						
72	62-00PM-3010-0S	SCREW PM 3x10 镀铬	1						
71	62-00BM-2604-0S	SCREW BM 2, 6x4 镀铬 加便处理	10						
70	KSC101-R20-00	NUT M5 六角螺母 镀铬	1						
69	KSD4000-P29-00	ORIENTED SLIDE RIGHT	1	POM					
68	KSD4000-P33-00	POSIT SLIDE (R) 27, 2x5, 8x6, 9	1	POM					
67	S3000-R03-00	SPRING $\varnothing 9, 3 \times 7$	1	不锈钢					

NO.:		Part/No:	DESCRIPTION		QTY	MAT.
UNLESS OTHERWISE SPECIFIED DIMENSIONS ARE IN MM						
TOLERANCES ARE IN MM						
ANGULAR						
X .XX						
.XX						
.005						
.005						
.005						
.005						
.005						
.005						
.005						
.005						
.005						
.005						
.005						
.005						
.005						
.005						
.005						
.005						
.005						
.005						
.005						
.005						
.005						
.005						
.005						
.005						
.005						
.005						
.005						
.005						
.005						
.005						
.005						
.005						
.005						
.005						
.005						
.005						
.005						
.005						
.005						
.005						
.005						
.005						
.005						
.005						
.005						
.005						
.005						
.005						
.005						
.005						
.005						
.005						
.005						
.005						
.005						
.005						
.005						
.005						
.005						
.005						
.005						
.005						
.005						
.005						
.005						
.005						
.005						
.005						
.005						
.005						
.005						
.005						
.005						
.005						
.005						
.005						
.005						
.005						
.005						
.005						
.005						
.005						
.005						
.005						
.005						
.005						
.005						
.005						
.005						
.005						
.005						
.005						
.005						
.005						
.005						
.005						
.005						
.005						
.005						
.005						
.005						
.005						
.005						
.005						
.005						
.005						
.005						
.005						
.005						
.005						
.005						
.005						
.005						
.005						
.005						
.005						
.005						
.005						
.005						
.005						
.005						
.005						
.005						
.005						
.005						
.005						
.005						
.005						
.005						
.005						
.005						
.005						
.005						
.005						
.005						
.005						
.005						
.005						
.005						
.005						
.005						
.005						
.005						
.005						
.005						
.005						
.005						
.005						
.005						
.005						
.005						
.005						
.005						
.005						
.005						
.005						
.005						
.005						
.005						
.005						
.005						
.005						
.005						
.005						
.005						
.005						
.005						
.005						
.005						
.005						
.005						
.005						
.005						
.005						
.005						
.005						
.005						
.005						
.005						
.00						



COMPANY: KEY JET Electronics.,LTD			
TITLE: KSD4000-MAIN BOARD POWER			
CODE:	SIZE:	DRAWING NO:	REV:  01
SCALE:			SHEET: 1 OF 7



D

C

B

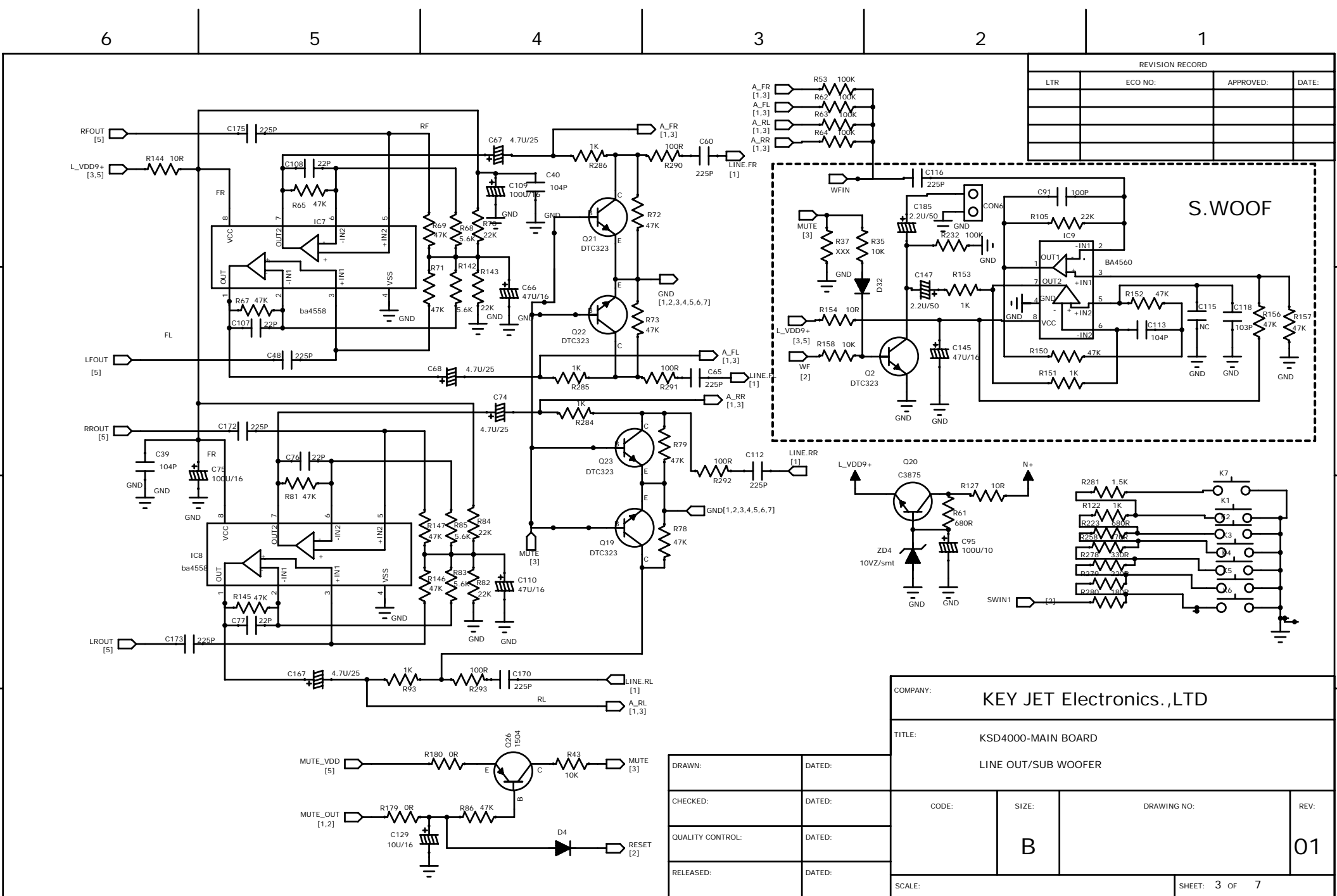
A

D

C

B

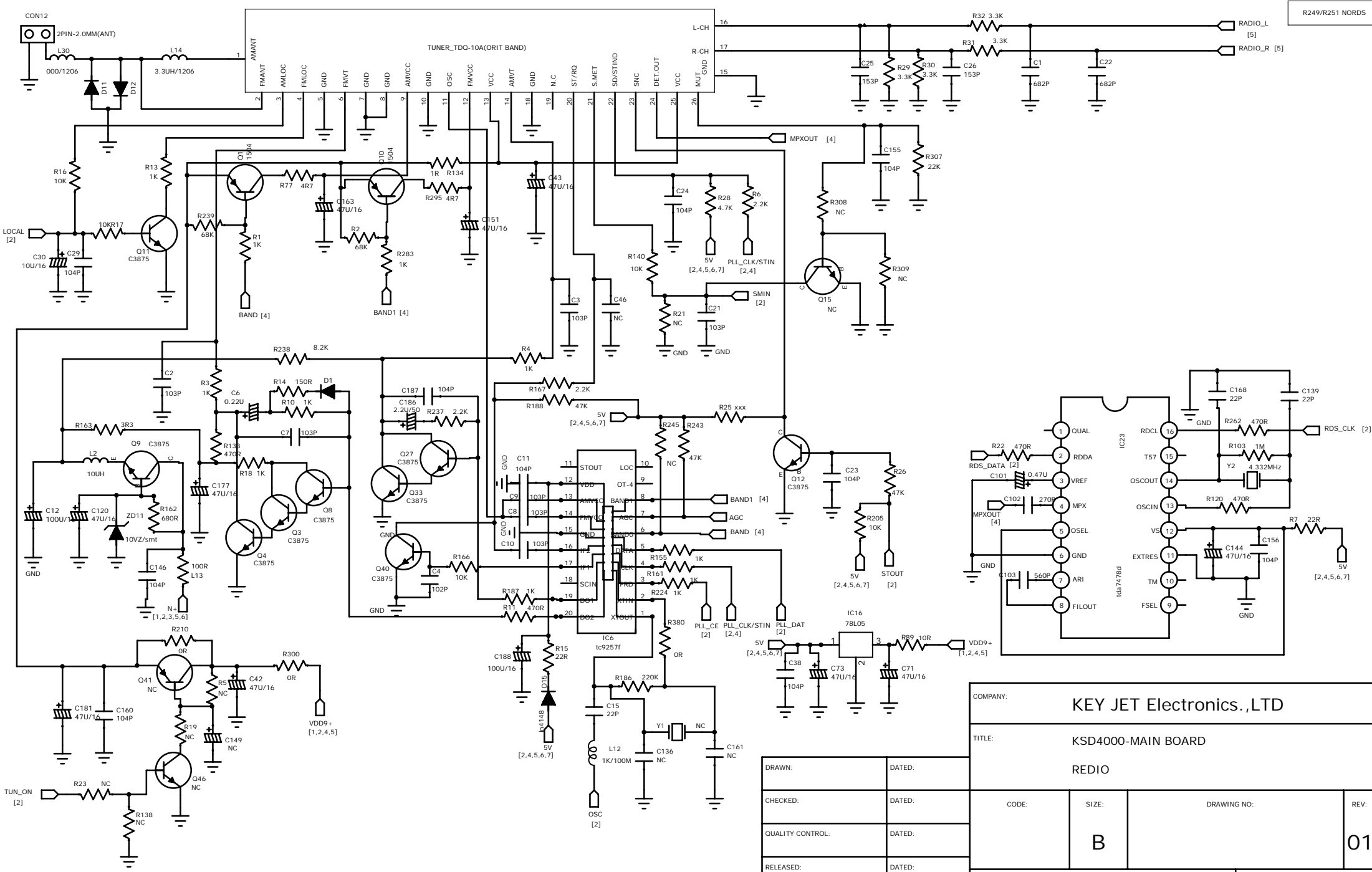
A



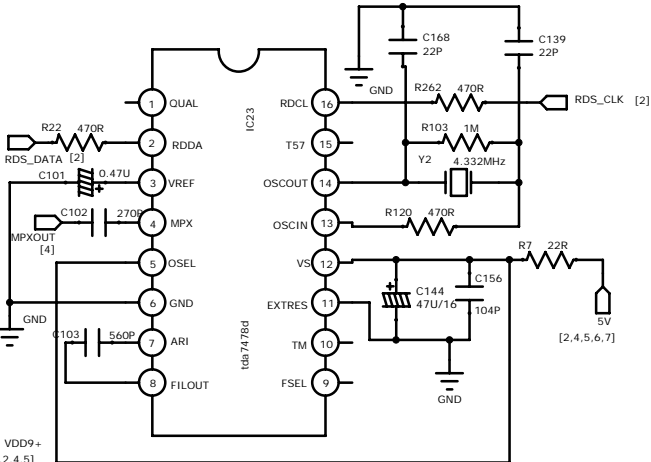
REVISION RECORD			
LTR	ECO NO:	APPROVED:	DATE:

COMPANY: KEY JET Electronics.,LTD			
TITLE: KSD4000-MAIN BOARD LINE OUT/SUB WOOFER			
CODE:	SIZE:	DRAWING NO:	REV:
	B		01
SCALE:			SHEET: 3 OF 7

DRAWN:	DATED:
CHECKED:	DATED:
QUALITY CONTROL:	DATED:
RELEASED:	DATED:

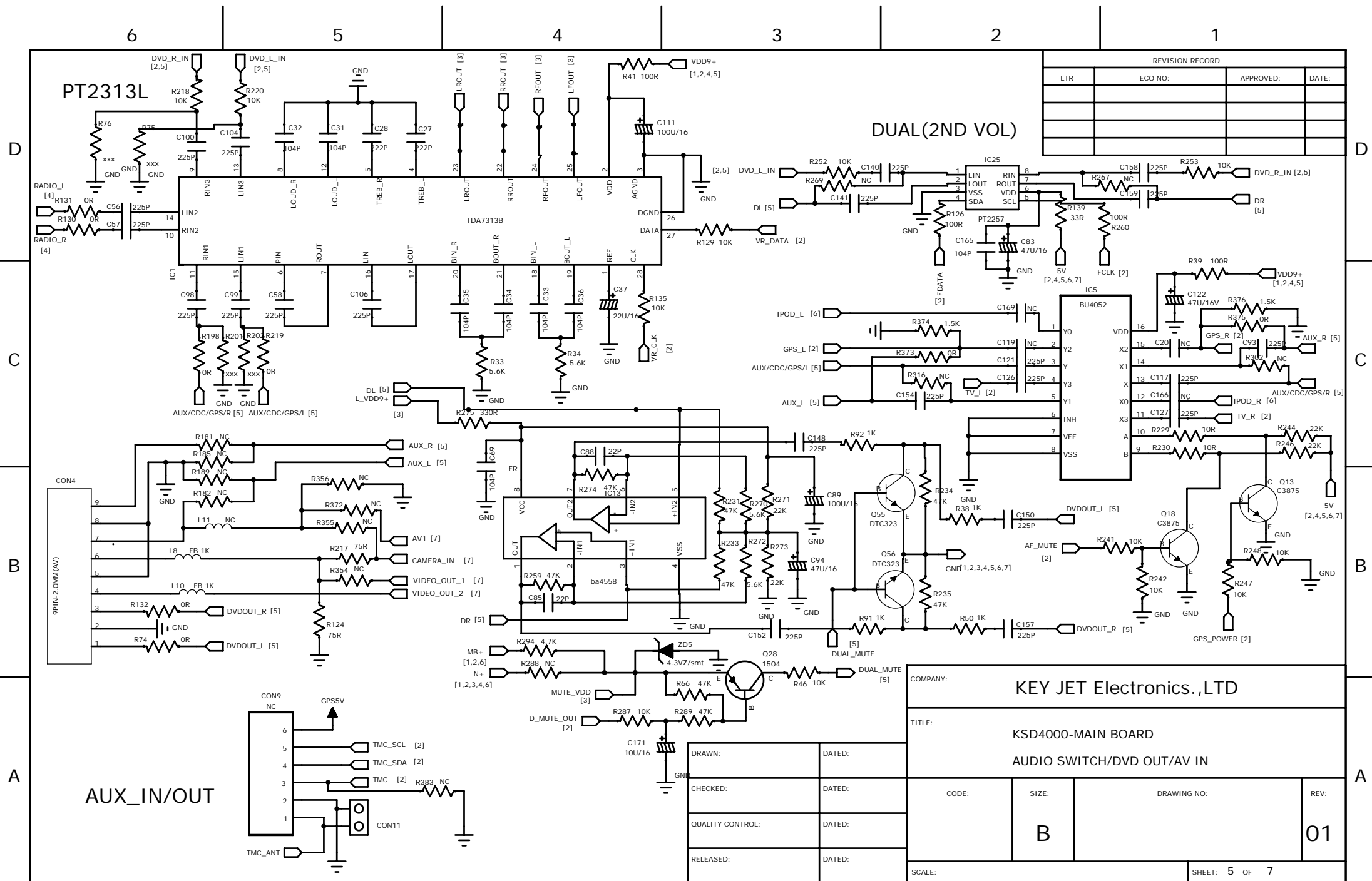


R249/R251 NORDS



COMPANY:					KEY JET Electronics.,LTD				
TITLE:					KSD4000-MAIN BOARD				
					REDIO				
CODE:			SIZE:		DRAWING NO:			REV:	
			B					01	
SCALE:								SHEET: 4 OF 7	

DRAWN:	DATED:
CHECKED:	DATED:
QUALITY CONTROL:	DATED:
RELEASED:	DATED:





6

5

4

3

2

1

D

C

B

A

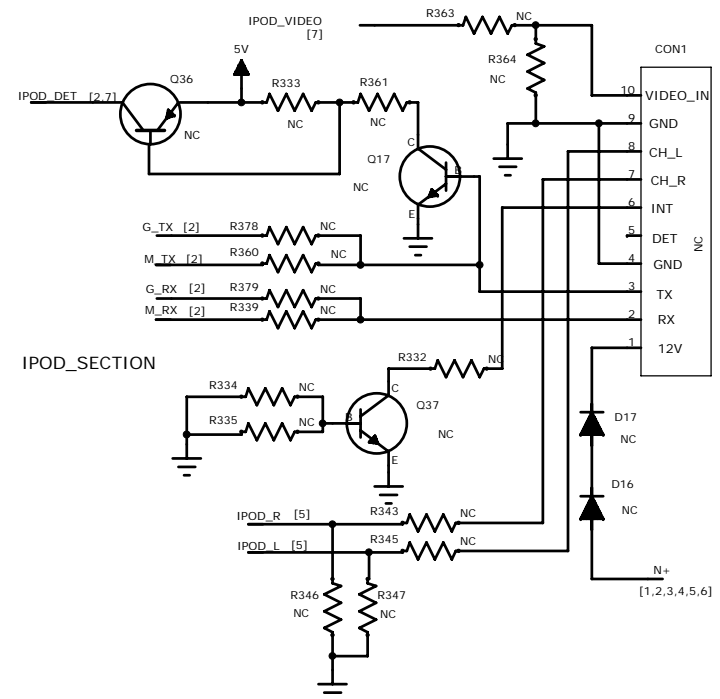
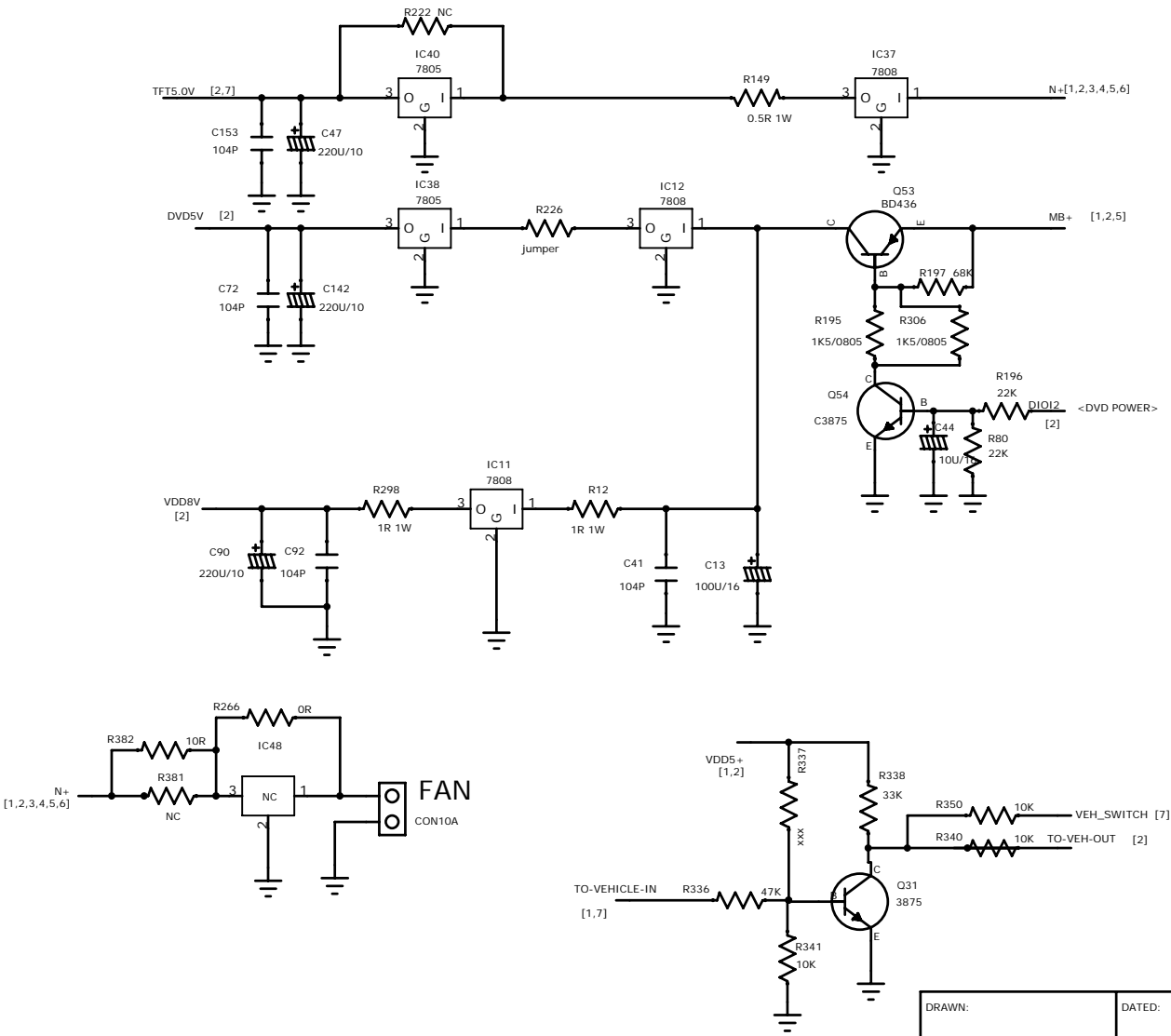
D

C

B

A

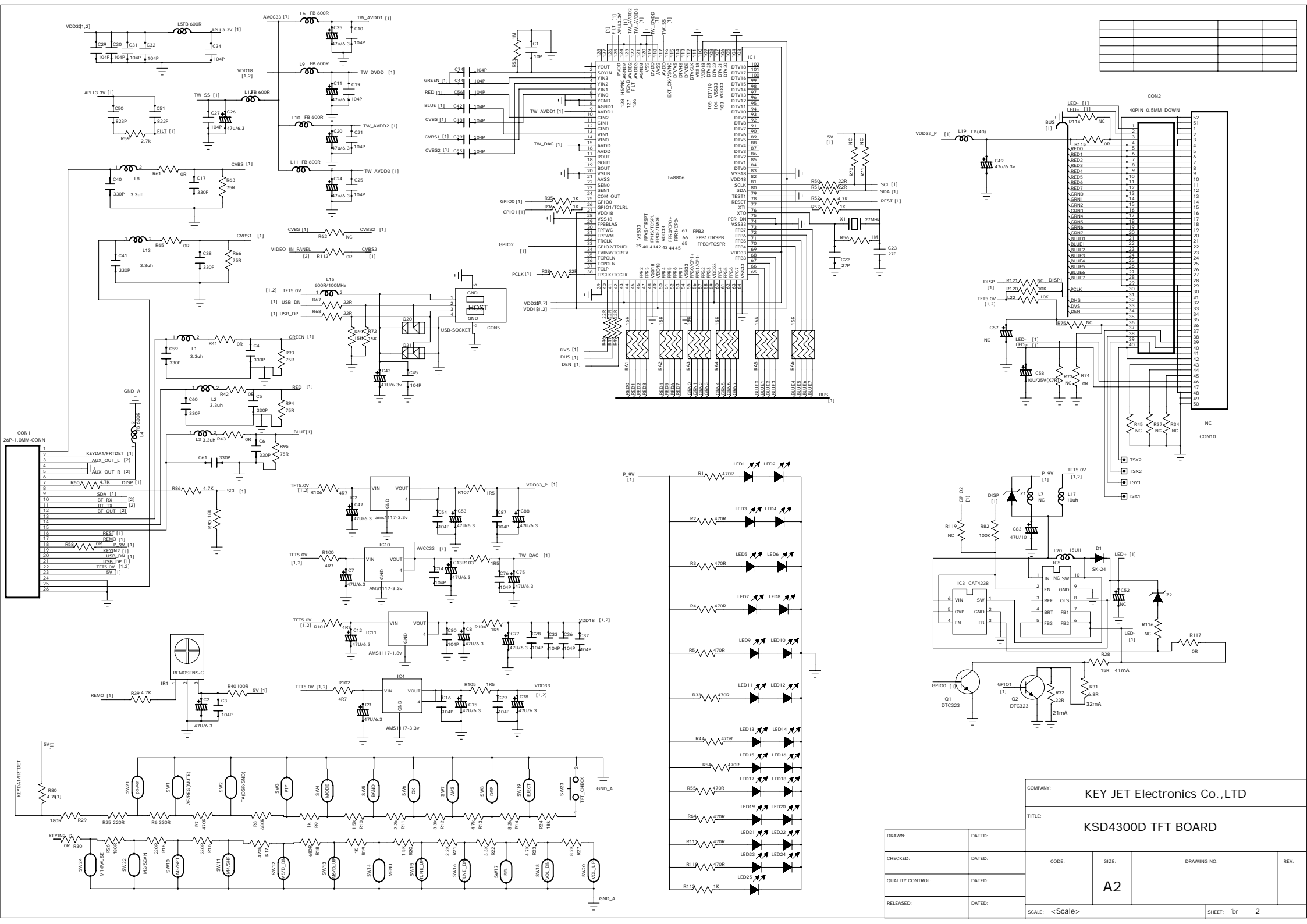
REVISION RECORD			
LTR	ECO NO:	APPROVED:	DATE:



COMPANY: KEY JET Electronics.,LTD			
TITLE: KSD4000-MAIN BOARD DVD POWER			
CODE:	SIZE:	DRAWING NO:	REV:
	B		01
SCALE: <Scale>			SHEET: 6 OF 7

DRAWN:	DATED:
CHECKED:	DATED:
QUALITY CONTROL:	DATED:
RELEASED:	DATED:

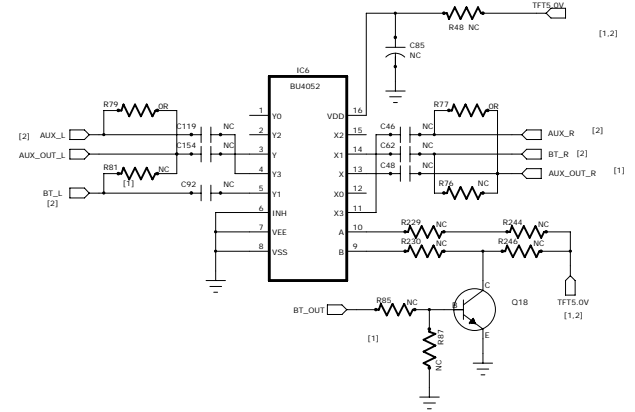
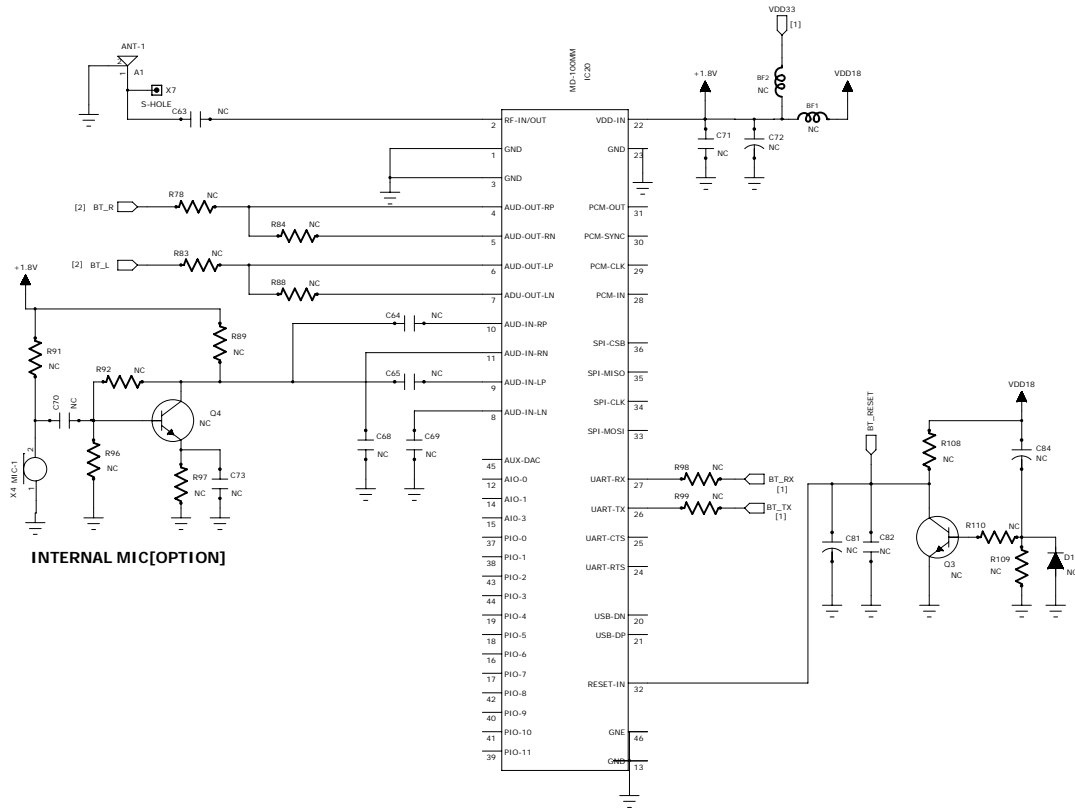




DRAWN:	DATED:
CHECKED:	DATED:
QUALITY CONTROL:	DATED:
RELEASED:	DATED:

DATED:
DATED:
DATED:
DATED:

COMPANY: KEY JET Electronics Co.,LTD			
TITLE: KSD4300D TFT BOARD			
CODE:	SIZE: A2	DRAWING NO:	REV:
SCALE: <Scale>			
SHEET: 1 of 2			



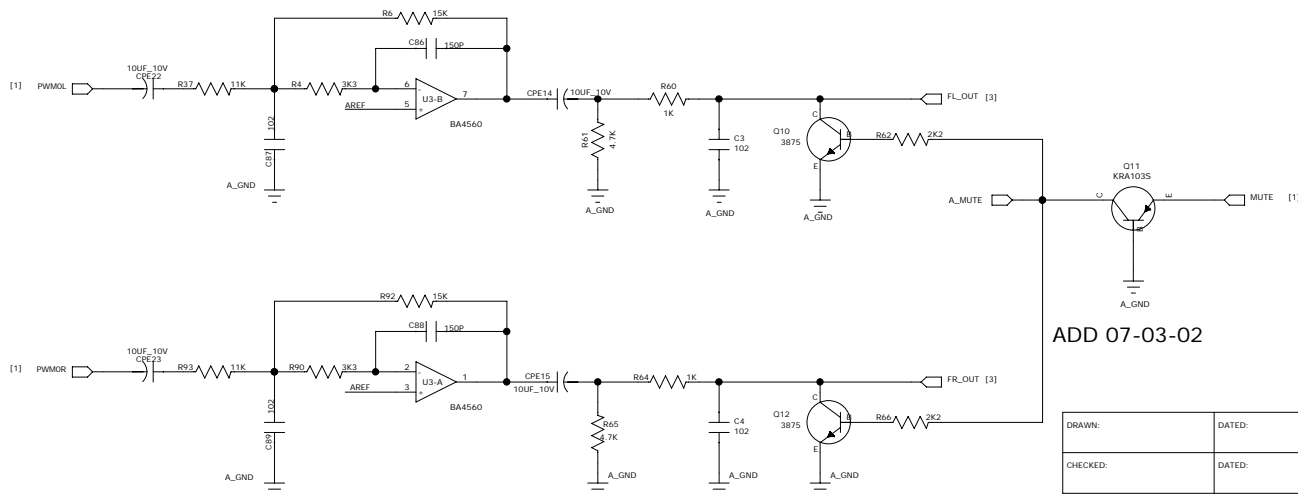




CN1  
32PIN-1MM



KEY JET Electronics.,LTD		
S5L5009 with foryou DL30H		
SIZE:  C	DRAWING NO:  S5L5009	REV:  0
SHEET: 4 OF 4		



DRAWN:	DATED:
CHECKED:	DATED:
QUALITY CONTROL:	DATED:
RELEASED:	DATED:

TITLE:

S5L5009 with foryou DL30H

REV:

01

SHEET: 4 OF 4



OUR MODEL	KSD4300D	BUYER	H.Rangel	BUYER MODEL	H-CMD4001
MAIN FUNCTION	DVD/CD/CD/MP3/DVIX	DESTINATION	RUSSIA	BOM NO.	000-034300
LCD	4.3' TFT LCD	BRAND	Hyundai	PO NO.	PS08028
DVD DECK	FORYOU DL-30H LOADER	REMOCON	yes	QTY	3044
BAND	AM/FM/RDS/OIRT(东欧)	POWERCON	DVD ISO CONNECTOR CABLE	BOM REV:	V1.0 2008.08.21

MODEL:KSD4300D

MAIN ASS'Y BOARD

400-03430001-0100  
403-03430001-0000

Part No		Value	Quantity	Location	Vender	Note
Chip Resistors						
01-00051500-00-00	01 000	RES_CHIP_0_OHM_1/4W_5%_1206	1	L30		
01-00059400-00-00	01 000	RES_CHIP_0_OHM_1/10W_5%_0603	36	R74 R108 R115 R117 R121 R128 R130-132 R136-137 R179-180 R198 R203 R208 R210-211 R214-216 R219 R266 R300 R303 R315 R320 R327-330 R353 R359 R373 R375 R380		
01-10859400-00-00	01 000	RES_CHIP_1_OHM_1/10W_5%_0603	2	R134 R193		
01-10059400-00-00	01 000	RES_CHIP_10_OHM_1/10W_5%_0603	9	R36 R56 R89 R127 R144 R154 R229-230 R299		
01-10159400-00-00	01 000	RES_CHIP_100_OHM_1/10W_5%_0603	10	L13 R39 R41 R126 R153 R260 R290-293		
01-10359400-00-00	01 000	RES_CHIP_10K_OHM_1/10W_5%_0603	29	R16-17 R20 R35 R43 R46 R87 R109 R125 R129 R135 R140 R158 R166 R171 R205 R218 R220 R241-242 R247-248 R252-253 R263 R287 R338 R341 R350		
01-10259400-00-00	01 000	RES_CHIP_1K_OHM_1/10W_5%_0603	33	R1 R3-4 R10 R13 R18 R38 R40 R48 R50 R91-93 R107 R119 R122 R141 R151 R155 R160-161 R187 R192 R194 R224 R265 R283-286 R326 R336 R340		
01-15259400-00-00	01 000	RES_CHIP_1.5K_OHM_1/10W_5%_0603	3	R281 R374 R376		
01-15159400-00-00	01 000	RES_CHIP_150_OHM_1/10W_5%_0603	2	R14 R249		
01-22259400-00-00	01 000	RES_CHIP_2.2K_OHM_1/10W_5%_0603	7	R6 R102 R104 R167 R237 R322-323		
01-47159400-00-00	01 000	RES_CHIP_470_OHM_1/10W_5%_0603	7	R11 R22 R27 R120 R133 R258 R262		
01-22359400-00-00	01 000	RES_CHIP_22K_OHM_1/10W_5%_0603	17	R70 R80 R82 R84 R100 R105 R143 R196 R244 R246 R251 R271 R273 R307 R311 R313-314		
01-47259400-00-00	01 000	RES_CHIP_4.7K_OHM_1/10W_5%_0603	19	R24 R28 R44-45 R49 R101 R110-113 R123 R207 R209 R212-213 R282 R294 R296 R301		
01-68159400-00-00	01 000	RES_CHIP_680_OHM_1/10W_5%_0603	3	R61 R162 R223		
01-15250200-00-00	01 000	RES_CHIP_1.5K_OHM_1/10W_5%_0805	4	R195,R306,R9,R317		
01-10459400-00-00	01 000	RES_CHIP_100K_OHM_1/10W_5%_0603	9	R53 R62-64 R200 R227-228 R232 R236		
01-18159400-00-00	01 000	RES_CHIP_180_OHM_1/10W_5%_0603	1	R280		
01-10559400-00-00	01 000	RES_CHIP_1M_OHM_1/10W_5%_0603	6	R95-97 R103 R106 R206		
01-22459400-00-00	01 000	RES_CHIP_220K_OHM_1/10W_5%_0603	1	R186		
01-12159400-00-00	01 000	RES_CHIP_120_OHM_1/10W_5%_0603	1	R114		
01-82859400-00-00	01 000	RES_CHIP_8.2_OHM_1/10W_5%_0603	1	R116		
01-22159400-00-00	01 000	RES_CHIP_220_OHM_1/10W_5%_0603	1	R279		
01-22059400-00-00	01 000	RES_CHIP_22_OHM_1/10W_5%_0603	2	R7 R15		
01-27359400-00-00	01 000	RES_CHIP_27K_OHM_1/10W_5%_0603	1	R55		
01-39259400-00-00	01 000	RES_CHIP_3.9K_OHM_1/10W_5%_0603	2	R178 R204		AUDIO
01-33859400-00-00	01 000	RES_CHIP_3.3_OHM_1/10W_5%_0603	1	R163		
01-33159400-00-00	01 000	RES_CHIP_330_OHM_1/10W_5%_0603	2	R275 R278		
01-33259400-00-00	01 000	RES_CHIP_3.3K_OHM_1/10W_5%_0603	8	R29-32 R42 R47 R51-52		
01-33359400-00-00	01 000	RES_CHIP_33K_OHM_1/10W_5%_0603	3	R164-165 R168		
01-33459400-00-00	01 000	RES_CHIP_330K_OHM_1/10W_5%_0603	2	R90 R225		
01-47359400-00-00	01 000	RES_CHIP_47K_OHM_1/10W_5%_0603	35	R26 R54 R65-67 R69 R71-73 R78-79 R81 R86 R88 R94 R98 R145-147 R150 R152 R156-157 R188 R190-191 R231 R233-235 R243 R259 R274 R289 R377		
01-47859400-00-00	01 000	RES_CHIP_4.7_OHM_1/10W_5%_0603	2	R77 R295		
01-51259400-00-00	01 000	RES_CHIP_5.1K_OHM_1/10W_5%_0603	1	R297		
01-56259400-00-00	01 000	RES_CHIP_5.6K_OHM_1/10W_5%_0603	8	R33-34 R68 R83 R85 R142 R270 R272		
01-68359400-00-00	01 000	RES_CHIP_68K_OHM_1/10W_5%_0603	6	R2 R8 R197 R239 R261 R276		

01-75059400-00-00	01 000	RES_CHIP_75_OHM_1/10W_5%_0603	2	R124 R217		
01-82259400-00-00	01 000	RES_CHIP_8.2K_OHM_1/10W_5%_0603	1	R238		
01-56159400-00-00	01 000	RES_CHIP_560_OHM_1/10W_5%_0603	1	R99		
01-47059400-00-00	01 000	RES_CHIP_47_OHM_1/10W_5%_0603	1	R148		
DIP Resistors						
01-10853000-00-00		RES_AXIAL_1_OHM_1W_5%	2	R12,R298		
01-50953000-00-00		RES_AXIAL_0.5_OHM_1W_5%	1	R149		
01-39052000-00-00		RES_AXIAL_39_OHM_1/2W_5%	1	R381		
Chip Ceramic Capacitors						
04-10434560-00-00	04 000	CAP_CHIP_104_X7R_+80%/-20%_50V_0603	37	C11 C17 C23-24 C29 C31-36 C38-41 C45 C50 C69 C72 C78 C84 C87 C92 C96 C113 C132 C134 C137-138 C146 C153 C155-156 C160 C165 C187 R277		
04-10330560-00-00	04 000	CAP_CHIP_103_X7R_10%_50V_0603	8	C2-3 C7-10 C21 C118		
04-22015560-00-00	04 000	CAP_CHIP_22P_NPO_5%_50V_0603	9	C15 C76-77 C85 C88 C107-108 C139 C168		
04-27015560-00-00	04 000	CAP_CHIP_27P_NPO_5%_50V_0603	1	C80		
04-10230560-00-00	04 000	CAP_CHIP_102P_X7R_10%_50V_0603	6	C4 C5 C61-64		
04-47015560-00-00	04 000	CAP_CHIP_47P_NPO_5%_50V_0603	2	C81,C86		
04-10115560-00-00	04 000	CAP_CHIP_100P_NPO_5%_50V_0603	1	C91		
04-15330360-00-00	04 000	CAP_CHIP_153P_X7R_10%_25V_0603	2	C25,C26		
04-22230560-00-00	04 000	CAP_CHIP_222P_X7R_10%_50V_0603	2	C27,C28		
04-68230560-00-00	04 000	CAP_CHIP_682P_X7R_10%_50V_0603	2	C1,C22		
04-27110560-00-00	04 000	CAP_CHIP_270P_NPO_10%_50V_0603	1	C102		
04-56110560-00-00	04 000	CAP_CHIP_560P_NPO_10%_50V_0603	1	C103		
04-22534160-00-00	04 000	CAP_CHIP_225P_X7R_+80%/-20%_10V_0603	36	C48 C51-54 C56-58 C60 C65 C93 C98-100 C104 C106 C112 C116-117 C121 C126-127 C140-141 C148 C150 C152 C154 C157-159 C170 C172-173 C175 C124		
02-10719020-00-00	02 000	CAP_ELEC.6×5_100u/16V_20% -40+105C	8	C12-14 C75 C89 C109 C111 C188		
02-10719010-00-00	02 000	CAP_ELEC.6×5_100u/10V_20% -40+105C	5	C18 C95 C183 C180 C184		
02-22419050-15-00	02 000	CAP_ELEC.4×5_0.22u/50V_20% -40+105C	1	C6		
02-10619020-00-00	02 000	CAP_ELEC.4×5_10u/16V_20% -40+105C	8	C30 C44 C123 C143 C164 C125 C129 C171		
02-10519050-15-00	02 000	CAP_ELEC.4×5_1u/50V_20% -40+105C	1	C16		
02-22519050-15-00	02 000	CAP_ELEC.4×5_2.2u/50V_20%-40+105C	3	C147 C185 C186		
02-22619020-00-00	02 000	CAP_ELEC.4×5_22u/16V_20% -40+105C	1	C37		
02-33819058-00-00	02 000	CAP_ELEC.12.5X21_3300u/16V_20% -40+105C	1	C59		
02-47419050-15-00	02 000	CAP_ELEC.4×5_0.47u/50V_20% -40+105C	2	C55,C101		
02-47519030-15-00	02 000	CAP_ELEC.4×5_4.7u/25V_20% -40+105C	4	C67,C68,C74,C167		
02-47619020-17-00	02 000	CAP_ELEC.5×5_47u/16V_20% -40+105C	23	C19 C42-43 C49 C66 C70 C71 C73 C79 C83 C94 C105 C110 C120 C122 C130-131 C144-145 C151 C163 C177 C181		
02-22719010-14-00	02 000	CAP_ELEC.6X5_220u/10V_20% -40+105C	3	C47 C90 C142		
Transistor						
13-21240716-00-00	13-021	TR_B1240_ATV	1	Q30		
13-78550827-00-00		TR_8550_SOT-23_PNP	1	Q25		
13-63875800-00-00	13-009	TR_KTC3875_SOT23-NPN	20	Q3-4 Q7-9 Q11-13 Q16 Q18 Q20 Q24 Q27 Q33-35 Q39-40 Q54 Q31		
13-13230924-00-00		TR_DTC323_SOT23-NPN	7	Q2 Q19 Q21-23 Q55-56		
13-71504800-00-00	13-008	TR_KTA1504_SOT23-PNP	6	Q1 Q10 Q26 Q28 Q32 Q48		
13-20436427-00-00		TRANSISTOR_TO-126_BD436_PNP_ST(塑封)	2	Q5,Q53		
DIODE						
08-24148080-00-00		DIO-REC-4X7MM_IN4148 _SMD_1/2W	16	ZD14 D5 D18 D25 D39 D3-4 D6-9 D15 D20- 21 D1 D32		
08-20051080-00-00	08-005	CHIP_ZENER_DIODE_5.1V_LL-34_1/2W_2%	2	ZD1 ZD10		
08-20056080-00-00	08-005	CHIP_ZENER_DIODE_5.6V_LL-34_1/2W_2%	1	ZD15		
08-20043080-00-00	08-005	CHIP_ZENER_DIODE_4.3V_LL-34_1/2W_2%	1	ZD5		
08-20010180-00-00	08-005	CHIP_ZENER_DIODE_10V_LL-34_1/2W_2%	2	ZD4 ZD11		
08-15401020-00-00	08-007	DIO-REC5401	1	D14		
Ics						
09-11117300-00-00		IC_AMS1117-ADJ_SOT223	1	IC17		

09-24558000-00-00	09-037	IC_JRC4558D_SOP-8	3	IC7,IC8,IC13		
09-14560300-00-00	09-013	IC_BA4560_SOP-8	1	IC9		
09-27478000-00-00	09-079	IC_TDA7478D_SOP16WIDE	1	IC23		
09-97025300-00-00	09-060	IC_KIA7025AF_SOT89	1	IC42		
09-16202500-00-00	09-031	IC_6202_TO-92	1	IC43		
09-02257300-00-00	09-068	IC_PT2257_SOP8	1	IC25		
09-22313300-00-00	09-080	IC_PT2313B_SOP28	1	IC1		
09-97291000-00-00	09-032	IC_TA7291S	1	IC2		
09-27386300-00-00	09-003	IC_TDA7386	1	IC3		
09-98878300-00-01		IC_RS8878_023S(CPU_80PIN_LQFP 14×14)	1	IC4		
09-59257300-00-00		IC_TC9257F	1	IC6		
09-17805300-01-00		IC_7805_TO-220_ST_金属散热片	2	IC38 IC40		
09-07808600-00-00		IC_7808_TO-220_ST_金属散热片	4	IC12,IC37,IC11,IC39		
09-17818500-00-00		IC_78L18_TO-92	1	IC36		
09-17800500-00-00		IC_78L05_TO-92	1	IC16		
09-04052300-00-00		IC_BU4052_SOP16	1	IC5		
LED						
26-12000320-00-00	26-044	LED-3PIE-RED-LEAD-TYPE	1	LED1		
SWITCH						
12-90000001-00-00	12-012	TOUCH_SWITCH_4PIN_DOWN	7	K1,K2,K3,K4,K5,K6,K7		
12-10066130-00-00	12-024	TACT SWITCHVHSW-FOR RESET SW 6617(13MM)	1	SW1		
Tuner						
14-05400010-00-00	NEW	TUNER_TDQ-10A(ORIT BAND)	1	TUN1		
Crystal Oscillator						
05-17200501-00-00	05-021	X-TAL-DIP_7.2MHz_2P_HC-49S	1	X1		
05-14332501-00-00	05-020	X-TAL-DIP_4.332MHz_2P_HC-49S	1	Y2		
Connectors						
57-00004200-07-02		ANT_WIRE_2PN_L=90MM_Φ3.5MM_DIP	1	ANT线		
58-03320010-00-01		CON_FPC32P_1.0MM_TOUCH_UP_90	1	CON2		
58-31060010-00-01		CON_6P-2.0MM_DIP_180	1	CON4		
58-03260010-00-01		CON_FPC26P_1.0MM_TOUCH_DOWN_90	1	CON5		
58-12200010-00-04	58-003	CON_POWER_20P(电源连接器)	1	CON7		
58-17260200-00-00		26P SOCKET(FIXING IN PANEL GUIDE)	1			
58-03020010-00-01	58-106R	CON_2P-2.0MM_DIP	2	CON6,M1		
58-03020026-00-02		CON_2P-1.25MM_SMT_90 卧贴	1	CON10A		
58-03080010-00-01		CON_8PIN_2.0_DIP_180	1	CON3		
Inductors						
07-09101100-01-00		INDUCTOR_0805_10UH_10%	1	L2		
07-09278000-00-00		INDUCTOR_0805_2.7UH_10%	2	L1,L4		
89-10209400-00-00		FB_0603_1K_SMD_100MHz	9	L3 L8 L10 L12 L23-24 L26-28		
07-09338010-00-00	07-045	INDUCTOR-1206_3.3UH_10%	1	L14		
WIRE LINE						
34-00210540-00-00	54-100	2P_MOTOR_WIRE_105MM_AWG28	1			
54-00430001-00-00		视频组合线 (DVD OUT+SUB WOOFER+TV)	1			
54-00430050-00-00		AV IN 线 转接线 一端带3.5MM(17.5±0.5) 4通道音频插 一端带音视频线(黄/黑) L=50	1	附件		
PCB						
78-44300640-01-00		KSD-4300D MAIN PCB BOARD	1			
78-34000026-10-00		26P SOCKET PCB 45X16 T=0.8 FR-4 NO PATTERN	1			
OTHER						
90-00170000-00-00		插17MM铁线(铁线上套高温套管)	1	R226		

684000.030.00.1120		OUTLINE BORDER 187.2*59.8*18	1	面壳	喷钛色油/无丝	ECN 更改
		外框/ABS黑色/喷钛色油/无丝印				
684000.040.04.1020		BASE 183.8*53*16.8	1	面壳	喷哑黑色油/无	旧物料
		（机座）(SD卡孔) ABS黑色 喷油				
684000-110.00.1020		LED TRANSPARENT	1	面壳		

		导光板			
KSD4000-P21-00		GEAR-A $\varnothing$ 11.5*5.4	1	齿轮支架	
		(齿轮-A)      POM 白色			
KSD4000-P22-00		GEAR 2 $\varnothing$ 20.5*8.8	1	齿轮支架	
		(齿轮2)      POM 白色			
KSD4000-P23-00		GEAR 3 $\varnothing$ 19.2*6.3	1	齿轮支架	
		(齿轮3)      POM 白色			
S3000-P38-00		GEAR1 $\varnothing$ 4*12.8	1	齿轮支架	
		(齿轮1)      POM 白色			
S3000-P41-00		GEAR4 $\varnothing$ 15.2*8	1	齿轮支架	
		(齿轮4)      POM 白色			
KSD4000-P28-00		ORIENTED SILIDE LEFT 85.3*21.2*13.6	1	导轨左	
		(导向滑块左)      POM 黑色			
KSD4000-P29-00		ORIENTED SLIDE RIGHT 119.8*19.7*13.6	1	导轨右	
		(导向滑块右)      POM 黑色			
KSD4000-P32-00		POSIT SLIDE (L)      27.2*5.8*6.9	1	导轨左	
		(定位滑块左)      POM 黑色			
KSD4000-P33-00		POSIT SILIDE (R)      27.2*5.8*6.9	1	导轨右	
		(定位滑块右)      POM 黑色			
KSD4000-P34-00		TRACK (L)      85.3*21.2*13.6	1	五金底壳	
		(导轨左)      POM 黑色			
KSD4000-P35-01		TRACK (R)      119.8*19.7*13.6	1	五金底壳	
		(导轨右)      POM 黑色			
KSD4000-P36-00		TOUCH—LINE      78.8*4.2*2	1	齿轮滑动支架	
		(接触条)      POM 黑色			
KSD4000-P37-00		LINE CLIP UP      15*22.6*7	1	后板及散热片	
		(线夹上)      POM 黑色			
KSD4000-P38-00		LINE CLIP DOWN      15*22.6*10.7	1	后板及散热片	
		(线夹下)      POM 黑色			
KSD4000-P51-00		ARRANGE LINE HOLD 40.3*22.3*8.4	1	滑动前板	
		(排线支架)      ABS黑色			
KSD4000-P52-00		PROP UP PLATE      13.6*9.8*6.5	1	滑动前板	
		(顶出块)      ABS黑色			
KSD4000-P53-00		LOCK UP      26.6*14.5*3	1	滑动前板	
		(锁定扣)      ABS黑色			

五金部份					
物料编号		名称/规格/颜色/材料/单位MM	数量 (PCS)	位置	丝印备注
KSD4000-M01-01		BOTTOM CABINET 178.2*159*50	1	外观	
		五金底壳      电解片			
KSD4000-M02-00		TOT COVER 178.2*160.8*6.6	1	外观	
		五金顶盖      电解片			
KSD4000-M57-11		SLIDE FRONT PANEL 159.5*42.1*10.5	1	前嘴	需丝印插卡位
		滑动前板(SD卡孔)      电解片 黑色			
KSD4000-M05-11		REAR PANEL 177*49*15	1	五金底壳	
		五金后板      电解片			
KSD4000-M06-01		GEAR SLIDE BRACKET 172*137.5*8.7	1	五金底壳	
		(齿轮滑动支架)      电解片 黑色			
KSD4000-M51-00		GEAR BRACKET      50*36*24	1	五金底壳	齿轮轴1、齿轮轴2、齿轮轴3、齿轮轴4
		齿轮支架      电解片			
KSD4000-M12-00		CONNECT PLATE 57*20.5*1.2	2	锁定块	
		连杆片      电解片 黑色			
KSD4000-M13-01		CLIP SETPLATE 27*19*1.2	2	齿条滑动支架	
		锁定块      电解片			
KSD4000-M14-00		MOTOR HOLD 20*16.2*7	1	齿轮支架	
		马达支架      铁片			
KSD4000-M55-00		METAL GEAR AND LONG SHAFT ASSEMBLY $\varnothing$	1	导轨左右	
		五金齿轮及长轴组件			

KSD2010-R02-00		SHAFT 2	1	齿轮支架		
		铜柱2 S50C				
KSD4000-M25-00		CLIP SHAFT $\varnothing$ 1.6*23	1	滑动前板		
		锁扣轴 黑色				
KSD4000-M26-00		PROP SHAFT $\varnothing$ 1.6*18	1	滑动前板		
		顶出块轴 黑色				
KSD4000-M31-01		CLIP SHAFT SPING 10*7*5	1	锁扣轴及锁定扣		
		扣轴弹弓 不锈钢 发黑处理				
KSD4000-M32-00		PROP SHAFT SPING 8*7*5	1	顶出块轴		
		顶出轴弹弓 不锈钢 发黑处理				
KSD4000-M60-00		GEAR-B $\varnothing$ 8.4*2.5		齿轮支架		
		(齿轮-B) 粉末冶金				
S3000-R03-00		SPRING 1 $\varnothing$ 9.3*7	1	齿轮1	07-1023-4200-37	
		压力弹簧 不锈钢				
S3000-R08-00		CIRCLIP-METAL	1	齿轮轴5		
		五金卡环 碳钢				
S3000-R02-00		MOTOR FF-050SB	1	前壳		
		(马达)				
KSD4000-M35-02		HEAT SINK 178.2*49.5*10.5	1	后板	07-1026-4200-39	
		散热片 铝材, 喷沙				
KSC-101-M09-01		MACHINE BOX 186.3*56.8*70	1			
		柜桶 电解片				
KSC-101-R19-00		spring washer	2	散热片, 附件		
		弹簧垫 $\varnothing$ 8* $\varnothing$ 5.2*2.2				
KSC-101-R18-00		WASHER	2	散热片, 附件		
		平垫 $\varnothing$ 10* $\varnothing$ 5.2*0.5				
28-41225100-00-00		(DFS25102M-12VDC) PIN 距1.25	1	后板		
		(小风扇)				
KSC-101-R21-00		M3 NUT	3	开关IC		
		M3 六角螺母				
KSD4000-M42-00		IC HEAT SINK	1	开关IC		
		开关IC散热片				
KSD4000-M53-01		STEEL SHEET	1	齿轮支架		NEW (已確認)
		弹簧钢片				

螺丝部份

物料编号		名称/规格/颜色/材料/单位MM	数量 (PCS)	位置	丝印备注	
62-00BM-2606-0B		螺丝 BM2.6x6 镀黑锌	4	机座+主支架4颗		
62-00PT-2004-0B		螺丝 PT2.0x4 黑色	4	排线支架(4)		
62-10CM-2004-0S		螺丝 CM2.0x4.5(台阶1.5) 镀锌	6	滑动前板4颗,连接片2颗		
62-00BM-2604-0S		螺丝 BM2.6x4 镀铬	11	马达支架3颗,后板+主支架(2),MAIN PCB 4颗,,顶盖1颗 牙箱1颗		
62-00BM-3015-0S		螺丝 BM3.0x15 镀铬	2	IC支架2 颗		
62-00BM-3008-0S		螺丝 BM3.0x8 镀铬	4	散热片+主支架(2),开关电源IC/三极管2颗		
62-00PA-3009-0S		螺丝 PT3.0x9 镀铬	2	风扇2颗	7-0720-4200-21	
62-00PT-2606-0S		螺丝 PT2.6x6 镀铬	2	电源插座2颗		
62-00BM-3004-0S		螺丝 BM3.0x4 镀镍	5	连接机芯支架与底盘4+收音头1		
62-10KM-2005-0B		螺丝 KM2.0x3.5 黑色	2	接触条 2 颗		
62-10KM-2002-0S		螺丝 KM2.0x2.5 镀镍	12	滑动导轨+主支架12颗		
62-1PWA-1705-5S		螺丝 PWA1.7x5.5 镀铬	4	五金固定片+导向滑块4颗		
62-10KM-2003-0S		螺丝 PM2.0x3 镀铬	4	马达(2),马达锁片(2)		
62-00KA-1705-00		螺丝 KA1.7x5 K头 1.7X5 黑色螺丝	2	滑动块+(连接片)2颗		
ksc-101-R17-00		screw	1			
		螺丝M5.0*25L		散热片1		
KSC-101-R20-00		NUT	2	附件\散热片		
		六角螺母 GB M5 镀白锌		散热片1		
62-00BM-3010-0S		螺 丝SCREW BM 3.0x10 镀铬	1	1189三极管		
62-00BM-2004-0B		螺 丝 SCREW BM 2x4 黑色	2	排线支架		

KSC101-R14-00		螺丝M5*6.0L	4	附件1		
PA5.0-20S		螺丝GB5.0*20PA(亮铬)	1	附件1		
62-00BM-2603-0S                      BM2.6X3镀镍 银色                      1                      弹簧钢片                      07-0720-4200-21						
其它部份						
物料编号		名称/规格/颜色/材料/单位MM	数量 (PCS)	位置	丝印备注	
KSC101-R26-00		PREVENT DUST CLOTH    129*11	1	机座		
		防尘布				
KSD4000-R43-00		PVC PATCH	1	PVC 片		
		出碟口PVC片				
KSD4000-RO1-00		MAINPCB-INSULAT PIECE	1	机座		
		主板PCB绝缘片                      纤维板				
KSD4000-M56-00		STEEL BALL    ϕ 2.0	1	齿轮模组		
		钢珠				
S3000-R20-01		CIRCLIP 3.5*1.6*0.25(石墨尼龙)	4	齿轮支架4		
		卡环				
KSD4000-R30-00		CLOTH AT BOTTOM CABINET	1	底壳		
		底壳防尘布				
KSD4000-R31-00		CLOTH AT TOP CoVER	1	顶盖		
		顶盖防尘布				
KSD4000-R33-00		GRAPHITE CLIP AT SHORT SHAFT	1	顶出块轴		
		顶出块轴石墨卡环				
KSD4000-R34-00		GRAPHITE CLIP AT LONG SHAFT	1	锁扣轴		
		锁扣轴石墨卡环				
KSD4000-R36-00		PLASTIC WASHER AT BASE-A	1	底座		
		底座橡胶垫-A				
KSD4000-R44-00		块巴纸 FIBRE PAPER 7x4mm	1	复位开关		
KSD4000-R46-00		SPRING	1	前咀挂钩		
		弹簧 ϕ 2.5*2.5*0.25				

OUR MODEL	KSD4300D	BUYER	H.Rangel	BUYER MODEL	H-CMD4001
MAIN FUNCTION	DVD/CD/CD/MP3/DVIX	DESTINATION	RUSSIA	BOM NO.	000-034300
LCD	4.3' TFT LCD	BRAND	Hyundai	PO NO.	PS08028
DVD DECK	FORYOU DL-30H LOADER	REMOCON	yes	QTY	3044
BAND	AM/FM/RDS/OIRT(东欧)	POWERCON	DVD ISO CONNECTOR CABLE	BOM REV:	V1.0 2008.08.21

MODEL:KSD4300D

TFT ASS'Y BOARD

400-03430008-0100  
403-03430008-0000

Part No		Value	Quantity	Location	Vender	Note
<b>Chip Resistors</b>						
01-00059400-00-00	01 000	RES_CHIP_0_OHM_1/10W_5%_0603	14	R30 R41-43 R58 R61 R65 R74 R112 R115 R181 R182 , R77,R79		
01-15859400-00-00	01 000	RES_CHIP_1.5_OHM_1/10W_5%_0603	4	R103-105 R107		
01-33859400-00-00	01 000	RES_CHIP_3.3_OHM_1/10W_5%_0603	1	R31		
01-47859400-00-00	01 000	RES_CHIP_4.7_OHM_1/10W_5%_0603	4	R100-102 R106		
01-10059400-00-00	01 000	RES_CHIP_10_OHM_1/10W_5%_0603	2	R28 R32		
01-22059400-00-00	01 000	RES_CHIP_22_OHM_1/10W_5%_0603	8	R38 R46-47 R49-51 R67 R68		
01-75059400-00-00	01 000	RES_CHIP_75_OHM_1/10W_5%_0603	7	R63 R66 R93-95 R124 R217		
01-10159400-00-00	01 000	RES_CHIP_100_OHM_1/10W_5%_0603	2	R40 R73		
01-18159400-00-00	01 000	RES_CHIP_180_OHM_1/10W_5%_0603	2	R26 R29		
01-22159400-00-00	01 000	RES_CHIP_220_OHM_1/10W_5%_0603	2	R15 R25		
01-33159400-00-00	01 000	RES_CHIP_330_OHM_1/10W_5%_0603	2	R6 R16		
01-47159400-00-00	01 000	RES_CHIP_470_OHM_1/10W_5%_0603	14	R1-5 R7 R17 R33 R44 R54-55 R64 R111 R118		
01-68159400-00-00	01 000	RES_CHIP_680_OHM_1/10W_5%_0603	2	R8 R18		
01-10259400-00-00	01 000	RES_CHIP_1K_OHM_1/10W_5%_0603	6	R9 R19 R35 R36 R57R113		
01-15259400-00-00	01 000	RES_CHIP_1.5K_OHM_1/10W_5%_0603	2	R10 R20		
01-22259400-00-00	01 000	RES_CHIP_2.2K_OHM_1/10W_5%_0603	2	R11 R21		
01-27259400-00-00	01 000	RES_CHIP_2.7K_OHM_1/10W_5%_0603	1	R59		
01-33259400-00-00	01 000	RES_CHIP_3.3K_OHM_1/10W_5%_0603	2	R12 R22		
01-47259400-00-00	01 000	RES_CHIP_4.7K_OHM_1/10W_5%_0603	7	R13 R23 R39 R52 R60 R80 R86		
01-82259400-00-00	01 000	RES_CHIP_8.2K_OHM_1/10W_5%_0603	2	R14 R27		
01-10359400-00-00	01 000	RES_CHIP_10K_OHM_1/10W_5%_0603	2	R120 L22		
01-15359400-00-00	01 000	RES_CHIP_15K_OHM_1/10W_5%_0603	2	R69 R72		
01-18359400-00-00	01 000	RES_CHIP_18K_OHM_1/10W_5%_0603	2	R24 R90		
01-10459400-00-00	01 000	RES_CHIP_100K_OHM_1/10W_5%_0603	1	R82		
01-10559400-00-00	01 000	RES_CHIP_1M_OHM_1/10W_5%_0603	2	R53 R56		
01-15059700-00-00	01 000	RES_CHIP_15R*4_OHM_1/10W_5%_0603	6	RA1-6		
<b>Chip Ceramic Capacitors</b>						
04-10015560-00-00	04 000	CAP_CHIP_10P_NPO_5%_50V_0603	1	C1		
04-27015560-00-00	04 000	CAP_CHIP_27P_NPO_5%_50V_0603	2	C22-23		
04-33115560-00-00	04 000	CAP_CHIP_330P_NPO_5%_50V_0603	10	C4-6 C17 C38 C40-41 C59-61		
04-82230360-00-00	04 000	CAP_CHIP_822P_X7R_10%_25V_0603	1	C51		
04-82330360-00-00	04 000	CAP_CHIP_823P_X7R_10%_25V_0603	1	C50		
04-10430360-00-00	04 000	CAP_CHIP_104P_X7R_10%_25V_0603	30	C3 C10 C14 C16 C19 C21 C25 C27 C28 C29 C30 C31 C32 C33 C34 C36 C37 C39 C42 C44 C45 C54 C55 C56 C74 C76 C79 C80 C87 C18		
04-10630310-00-00	04 000	CAP_CHIP_10U_X7R_10%_25V_1206	1	C58		
04-47650021-00-00	04 000	CAP_TAN_47u/6.3V_10%_A	21	C2 C7-9 C11 C12-13 C15 C20 C24 C26 C35 C43 C47 C49 C53 C75 C77-78 C88 C133		
04-47650122-00-00	04 000	CAP_TAN_47u/10V_10%_B	1	C83		
<b>Inductors</b>						
07-09100060-00-00		10UH_10%_0603	1	L17		
07-09150043-00-00	07-040	COIL_SMT_15UH_4.0x4.5*3MM_CD43	1	L20		
07-09338060-00-00		3.3UH_10%_0603	5	L1-3 L8 L13		
89-60109400-00-00		FB_0603_600R_SMD_100MHz	9	L4-6 L9-12 L15 L19		
<b>Discrete Semiconductors</b>						
08-90022080-00-00	08-004	DIO-AXIAL-SMTN_SK24	1	D1		
<b>DIODE</b>						
08-29900040-00-00	08-010	DIO_BAV99_SOT-23_A7	2	Q20-21		
<b>Transistor</b>						
13-13230924-00-00		TR_DTC323_SOT23-NPN	2	Q1-2		
<b>Ics</b>						
09-11117318-00-00		IC_AMS1117_1.8V_SOT-223	1	IC11		
09-11117333-00-00		IC_AMS1117_3.3V_SOT-223	3	IC2 IC4 IC10		
09-04238300-00-00	NEW	IC_CAT4238_SOT23--5	1	IC5		
09-98806600-00-00		IC_TW8806_QFP128	1	IC1		
<b>Connectors</b>						
58-17260200-01-00		CON_26P_FLOAT_PLUG_ESTF2-26T-01	1	CON1		
58-03400021-01-06		CON_40P_0.5MM_下接 带锁	1	CON2		
58-03450021-00-06		CON_45P_0.5MM_上接 带锁	1			
58-07060010-00-04		CON_PJ-313B_乐兴达	1	CON3	乐兴达	

58-28000000-00-00		USB SOCKET VERTICAL	1	CON5		同KSC101(760)
LED						
26-16060310-00-00		LED_CHIP_0603_WHITE_SUPPER	25	LED1-LED25		
LCD						
25-00430029-03-00		SAMSUNG_LMS430HF02	1		三星	
REMOTE RECEIVE						
19-01385080-00-01	90-011	REMOSENSOR_3P_5V_38KHz(IR_RECEVER)	1	IR1		
SWITCH						
12-84200010-00-00		TACT-SW-2P-1101E 6X3.5X4.3MM	22	SW1 SW2 SW3 SW4 SW5 SW6 SW7 SW8 SW10 SW11 SW12 SW13 SW14 SW15 SW16 SW17 SW18 SW19 SW20 SW21 SW22 SW24		
12-90000001-00-00		TOUCH_SWITCH_4PIN_DOWN	1	SW23		
FPC						
34-04005302-00-00		FPC_40pin_0.5mm_L=53MM 同向接触	1			
34-02610002-00-00		FPC-26P-1.0MM-100MM-CO-CO	1			
Crystal Oscillator						
05-62700401-05-00	05-005	X-TAL-SMT_27MHz_2P	1	X1		
PCB						
78-44010640-00-00		071112 V:B 17.3*9*1.2MM	1			
78-44300640-08-00		KSD4300-TFT-B(TW8806) 2007.11.12 VER:B 174*47*1.2MM	1			

TFT Panel

68-40100100-11-01		FRONT_CABINET_180°53°15.6 前嘴面壳/ABS+PC黑色	1	面壳_表面闪金黑加喷光油(同之前做的样板)		旧物料
68-40100220-00-00		REAR_CABINET_180°53°8.4 26P+W/O 无SD卡 前嘴后盖	1	面壳	表面黑色不喷油	旧物料
68-43000300-11-01		TFT_FRONT_COVER_4.3寸 TFT面盖 4.3寸/PC黑色	1	面壳_黑色线框内表面闪金黑加喷光油 红色线框内喷枪色油,丝印白色 HYUNDAI LOGO		
68-40100500-00-00		TFT_REAR_COVER_TFT后盖/ABS+PC黑色	1	面壳_表面黑色不喷油		
68-40100600-12-00		BACK_LIGHT_LEFT_（导光板左）PC透明	1	面壳_透明PC,背面喷雾状白油		
68-40100700-12-00		BACK_LIGHT_RIGHT_（导光板右）PC透明	1	面壳_透明PC,背面喷雾状白油		
68-40100800-13-00		EJ_KNOB_（出盒钮）ABS777 象牙白	1	面壳	电镀枪色	
68-40100900-13-00		FUNCTION_KNOB_A_（四连方钮A）ABS777 象牙白	1	面壳	电镀枪色	
68-40101000-13-00		FUNCTION_KNOB_B_（八连方钮B）ABS777 象牙白	1	机座	电镀枪色	
68-40101100-13-00		PLATING_RING_（电镀圈）ABS777 象牙白 电镀	1	面壳	电镀枪色	
68-40101200-13-00		FUNCTION_KNOB_C_（四连方钮C）ABS777 象牙白	1	面壳	电镀枪色	
68-40101300-13-00		OPEN_KNOB_（打开钮）ABS777 象牙白	1	面壳	电镀枪色	
68-40101400-04-01		VOLUME_KNOB_（四方向钮）ABS777 象牙白	1	面壳_白色原料,黑色面油,字符镭雕,透光		
68-40101500-04-01		OK_KNOB_（OK钮）ABS777 象牙白	1	面壳_白色原料,黑色面油,字符镭雕,透光		
68-40101600-00-01		REMOTE_LENS_（遥控镜片）PC透明 紫色	1	面壳	透明紫色	
66-40101700-00-01		CU_SHEET_LEFT_铜片(左)	1	面壳	电镀,字符腐蚀穿	
66-40101800-00-01		CU_SHEET_LEFT_铜片(右)	1	面壳	电镀,字符腐蚀穿	
68-40101700-00-00		USB_COVER_USB盖	1	面壳		
KSD4000-M33-00		DOOR_SHAFT_BRAEKET_（L）（门轴支架左）电解片	1	前壳		新零件
KSD4000-M34-00		DOOR_SHAFT_BREAKET_（R）（门轴支架右）电解片	1	前壳		新零件
KSD4000-M30-01		EJECT_KNOB_SPING_φ3.5*13.6 射出钮弹弓 不锈钢	1	射出钮		
62-00PA-1706-0B		螺丝 PA1.7x6 镀黑锌	11	KB板3颗,TFT面,底板4颗,左右门轴旋转支架4颗		
62-00PT-2207-0B		螺丝 PT2.2x8 镀黑锌	4	前咀面壳后板4颗		
62-00KT-2004-0B		螺丝 KT2.0x4 镀黑锌	2	TFT连接板2		
KSD4000-R52-00		PVC_SHEET_90X4X0.20MM	1	TFT面壳		
KSD4000-R53-00		FIBBER_PAPER_29X13.8X0.50MM	1	TFT面壳		
KSD4000-R39-00		EVA_AT_REMOTE_LENS	2	遥控镜		
		遥控镜EVA				
KSC101-R34-00		sponge_8*6*2	2	遥控头		
		海绵				
KSD4000-R45-00		RUB-1_橡胶条—1	1	TFT下端		
S3000-R06-00		RUB-2_橡胶条—2	3	TFT下端		
46-00094300-00-00		EVA_14.1*5.9*2.0MM	1	面壳		



OUR MODEL	KSD4300D	BUYER	H.Rangel	BUYER MODEL	H-CMD4001
MAIN FUNCTION	DVD/CD/CD/MP3/DVIX	DESTINATION	RUSSIA	BOM NO.	000-034300
LCD	4.3' TFT LCD	BRAND	Hyundai	PO NO.	PS08028
DVD DECK	FORYOU DL-30H LOADER	REMOCON	yes	QTY	3044
BAND	AM/FM/RDS/OIRT(东欧)	POWERCON	DVD ISO CONNECTOR CABLE	BOM REV:	V1.0 2008.08.21

MODEL:KSD4300D

SERVO ASS'Y BOARD

400-03400003-0100(PCB组件编码)

403-03430003-0000(整体组件编

Part No		Value	Quantity	Location	Vender	Note
Chip Resistors						
01-00059400-00-00	01 000	RES_CHIP_0_OHM_1/10W_5%_0603	9	R29 R34-35 R68-69 R106 R123-124 R55		
01-10859400-00-00	01 000	RES_CHIP_1_OHM_1/10W_5%_0603	4	R41 R44-46		
01-10059400-00-00	01 000	RES_CHIP_10_OHM_1/10W_5%_0603	4	R82-83 R87-88		
01-10159400-00-00	01 000	RES_CHIP_100_OHM_1/10W_5%_0603	8	R63 R100 R102 R128-130 R132-133		
01-10259400-00-00	01 000	RES_CHIP_1K_OHM_1/10W_5%_0603	7	R30 R40 R42 R60 R64 R126 R76		
01-10359400-00-00	01 000	RES_CHIP_10K_OHM_1/10W_5%_0603	18	R3 R11 R24-25 R27-28 R33 R38 R96-97 R104 R107-110 R134,R77		
01-10459400-00-00	01 000	RES_CHIP_100K_OHM_1/10W_5%_0603	7	R8 R32 R48 R53-54 R85 R105		
01-10559400-00-00	01 000	RES_CHIP_1M_OHM_1/10W_5%_0603	1	R95		
01-11359400-00-00	01 000	RES_CHIP_11K_OHM_1/10W_5%_0603	4	R37 R86 R89 R93		
01-12159400-00-00	01 000	RES_CHIP_120_OHM_1/10W_5%_0603	2	R80,R81		
01-18159400-00-00	01 000	RES_CHIP_180_OHM_1/10W_5%_0603	1	R113		
01-15159400-00-00	01 000	RES_CHIP_150_OHM_1/10W_5%_0603	3	R70-R72		
01-15259400-00-00	01 000	RES_CHIP_1.5K_OHM_1/10W_5%_0603	1	R94		
01-15359400-00-00	01 000	RES_CHIP_15K_OHM_1/10W_5%_0603	6	R22 R67 R114-115,R6,R92		
01-22259400-00-00	01 000	RES_CHIP_2.2K_OHM_1/10W_5%_0603	5	R50-51 R62 R66,R116		
01-24159400-00-00	01 000	RES_CHIP_240_OHM_1/10W_5%_0603	2	R78,R79		
01-24259400-00-00	01 000	RES_CHIP_2.4K_OHM_1/10W_5%_0603	1	R31		
01-30359400-00-00	01 000	RES_CHIP_30K_OHM_1/10W_5%_0603	1	R43,R56		
01-33259400-00-00	01 000	RES_CHIP_3.3K_OHM_1/10W_5%_0603	6	R4 R16 R19 R21 R90 R121		
01-33359400-00-00	01 000	RES_CHIP_33K_OHM_1/10W_5%_0603	3	R10 R26 R57		
01-39359400-00-00	01 000	RES_CHIP_39K_OHM_1/10W_5%_0603	1	R49		
01-47159400-00-00	01 000	RES_CHIP_470_OHM_1/10W_5%_0603	2	R84 R91		
01-47259400-00-00	01 000	RES_CHIP_4.7K_OHM_1/10W_5%_0603	11	R2 R7 R13 R17 R23 R98-99 R103 R61 R65 R111		
01-47359400-00-00	01 000	RES_CHIP_47K_OHM_1/10W_5%_0603	4	R1 R12 R39 R52		
01-51259400-00-00	01 000	RES_CHIP_5.1K_OHM_1/10W_5%_0603	2	R18,R20		
01-51059400-00-00	01 000	RES_CHIP_51_OHM_1/10W_5%_0603	1	R117		
01-75059400-00-00	01 000	RES_CHIP_75_OHM_1/10W_5%_0603	6	R73, R74-75 R131,R112,R58		
01-82259400-00-00	01 000	RES_CHIP_8.2K_OHM_1/10W_5%_0603	2	R5,R15		
01-82359400-00-00	01 000	RES_CHIP_82K_OHM_1/10W_5%_0603	1	R9		
Chip Ceramic Capacitors						
04-10230560-00-00	04 000	CAP_CHIP_102P_X7R_10%_50V_0603	12	C3-4 C51 C53-55 C59 C74-75 C87 C89 C134		
04-10330560-00-00	04 000	CAP_CHIP_103P_X7R_10%_50V_0603	2	C19,C22		
04-10434560-00-00	04 000	CAP_CHIP_104P_X7R_+80%/-20%_50V_0603	59	C2 C5-8 C10-11 C13 C16-18 C20-21 C25-29 C31-44 C47-48 C57-58 C60-61 C63 C68-73 C76-78 C81 C83 C85 C90-91 C96-97 C102 C107 C133,C92		
04-20230560-00-00	04 000	CAP_CHIP_202P_X7R_10%_50V_0603	2	C49 C52		
04-22230560-00-00	04 000	CAP_CHIP_222P_X7R_10%_50V_0603	3	C1 C23-24		
04-27230560-00-00	04 000	CAP_CHIP_272P_X7R_10%_50V_0603	1	C84		
04-22430560-00-00	04 000	CAP_CHIP_224P_X7R_10%_50V_0603	2	C46,C66		
04-33330560-00-00	04 000	CAP_CHIP_333P_X7R_10%_50V_0603	1	C50		
04-33430560-00-00	04 000	CAP_CHIP_334P_X7R_10%_50V_0603	1	C65		
04-47230560-00-00	04 000	CAP_CHIP_472P_X7R_10%_50V_0603	1	C14		
04-27015560-00-00	04 000	CAP_CHIP_27P_NPO_5%_50V_0603	2	C79,C80		
04-15115560-00-00	04 000	CAP_CHIP_150P_NPO_5%_50V_0603	2	C86 C88		
04-15230560-00-00	04 000	CAP_CHIP_152P_X7R_10%_50V_0603	2	C64 C67		
04-18230560-00-00	04 000	CAP_CHIP_182P_X7R_10%_50V_0603	1	C62		
04-18015560-00-00	04 000	CAP_CHIP_18P_NPO_5%_50V_0603	1	C129		
04-10115560-00-00	04 000	CAP_CHIP_100P_NPO_5%_50V_0603	6	C9 C12 C30 C82 C15,C45		
04-82115560-00-00	04 000	CAP_CHIP_820P_NPO_5%_50V_0603	1	C56		
Electrolytic Capacitors						
04-47659122-00-00		CAP_TAN_CHIP_B_47u/10V_20% -105C	6	CPE6,CPE8 CPE3 CPE10 CPE16-17		
04-47659121-00-00		CAP_TAN_CHIP_A_47UF_6.3V_20%_105C	8	CPE1-2,CPE4-5,CPE7,CPE12,CPE18, CPE21		

04-10659121-00-00		CAP_TAN_CHIP_A_10u/10V_20% -105C	9	CPE9 CPE11 CPE13 CPE19-20 CPE22-23 CPE14,CPE15		
Discrete Semiconductors						
08-14001020-00-00		DIO_1N4001_DIP_DO-41	2	D1,D2		NEW
08-24148150-00-00		DIO-SMT_1N4148 SMD 400MW_SOD-523	2	D6,D7		
TRANSISTOR						
13-60106800-00-00	13-012	TR_KRC106S_SOT-23_NPN	3	Q2,Q3,Q4		
13-63875800-00-00	13-009	TR_KTC3875_SOT-23_NPN	6	Q1 Q5-7 Q10 Q12		
13-71504800-00-00	13-008	TR_KTA1504_SOT23-PNP(OR 2SA1182)	2	Q8,Q9		
13-70103800-00-00		TR_KRA103S_SOT23-PNP	1	Q11		
LED						
26-12030530-00-00	26-025	LED ORANGE DIP 3MM R304O3CY	1	LED1		
26-91180510-00-00	26-020	LED-PHOTO-2.5_EL-23G	2	D3,D4		
Crystal Oscillator						
05-62700401-05-00	05-005	X-TAL-SMT_27MHz_2P	1	X1		
Inductors						
07-01250000-00-00		0805_25UH_10%	1	FB1		
07-09101100-01-00		0805_10UH_10%	8	L3 L5 L11 L17 L19-20 L4,L10		
89-10209400-00-00		磁珠 _SMT_0603_FB_1K/100M	8	L6-9,FB2-5		
Ics						
09-94504300-00-00	09-069	IC_IP4504AL_HSOP28	1	U5		
09-91632300-00-00		IC_K4S641632_TSOP54(0.8)	1	U7		
09-92980030-00-00		IC_EN29LV800AB_TSOP48(0.5)	1	U6		
09-05500930-00-00		IC_S5L5009X_QFP216(0.4)	1	U2		
09-11117300-01-00		IC_AMS1117_ADJ_SOT-223	1	U1		
09-11117333-01-00		IC_AMS1117_3.3V_SOT-223	2	U4,U12		
09-14560300-00-00	09-013	IC_BA4560_SOP-8	1	U3		
09-02402300-04-00	09 062	IC_AT24C02_SOP-8	1	U9		
Connectors						
58-04240001-00-06	58-102	FPC24P-0.5MM_SMD_Horizontal_TOP_CONTACT	1	CN2		
58-28156100-00-00	58-085	SD-156-1XX000000X	1	J5		
WIRE LINE						
34-03212013-00-00		FFC_32P-1.0PITCH-_120mm	1	CN1		
SWITCH						
12-11110000-00-00	12-006	SW-SW111_ORIGINAL_SWITCH_SHINMEI	1	SW1		
DECK						
40-40030050-00-00		DVD DECK AUTO REV_FORYOU_DL-30H	1			NEW
PCB						
78-44200640-03-01		KSD-4000 SERVO PCB S/D 108*106*1.2MM/SAMSUNG	1	SERVO PCB		NEW

KSD4000-M08-00		DECK HOLD 1 27.5*12*9 机芯支架1 电解片	1	五金底壳		
KSD4000-M09-00		DECK HOLD 2 22.5*12*9 机芯支架2 电解片	1	五金底壳		
KSD4000-M10-00		DECK HOLD 3 32*31.5*14 机芯支架3 电解片	1	五金后板		
KSD4000-M11-00		DECK HOLD 4 32*31.5*16 机芯支架4 电解片	1	五金后板		
62-00CM-2604-0S		螺丝 CM2.6x4 镀铬	6	机芯支架与机芯6颗		
62-00BM-2004-0S		螺 丝 SCREW BM 2x4 镀铬	3	解码板		
KSD4000-R50-00		FIBER PAPER 0.5X23X30 MM	1	解码板		
德赛的料号		玻璃纤维胶纸 白色透明 25mm	2段	机芯外露3PIN线		

OUR MODEL	KSD4300D	BUYER	H.Rangel	BUYER MODEL	H-CMD4001
MAIN FUNCTION	DVD/CD/CD/MP3/DVIX	DESTINATION	RUSSIA	BOM NO.	000-034300
LCD	4.3' TFT LCD	BRAND	Hyundai	PO NO.	PS08028
DVD DECK	FORYOU DL-30H LOADER	REMOCON	yes	QTY	3044
BAND	AM/FM/RDS/OIRT(东欧)	POWERCON	DVD ISO CONNECTOR CABLE	BOM REV:	V1.0 2008.08.21

MODEL:KSD-4000S(同KSD7200 TV PCB)

TV ASS'Y BOARD

400-03710016-0300(PCB组件编码)  
403-03710016-0100(整体组件编码)

Part No		Value	QTY	Location	Vender	Note
Chip Resistors						
01-10859000-00-00	01 000	RES_AXIAL_1.0_OHM_1/2W_5% （碳膜电阻）	1	R26		
01-00051500-00-00	01 000	RES_CHIP_0_OHM_1/4W_5%_1206	4	L5,L6,L12,L13		
01-10059400-00-00	01 000	RES_CHIP_10_OHM_1/10W_+/-5%_ 0603	1	R49		
01-10159400-00-00	01 000	RES_CHIP_100_OHM_1/10W_5%_ 0603	1	R20		
01-10259400-00-00	01 000	RES_CHIP_1K_OHM_1/10W_5%_ 0603	1	R27		
01-10359400-00-00	01 000	RES_CHIP_10K_OHM_1/10W_5%_ 0603	2	R22,R46		
01-15459400-00-00	01 000	RES_CHIP_150K_OHM_1/10W_5%_ 0603	1	R39		
01-33059400-00-00	01 000	RES_CHIP_33_OHM_1/10W_+/-5%_ 0603	3	R17,R18,R47		
01-39159400-00-00	01 000	RES_CHIP_390_OHM_1/10W_5%_ 0603	1	R24		
01-39259400-00-00	01 000	RES_CHIP_3.9K_OHM_1/10W_5%_ 0603	1	R40		
01-47259400-00-00	01 000	RES_CHIP_4.7K_OHM_1/10W_5%_ 0603	1	R28		
01-56159400-00-00	01 000	RES_CHIP_560_OHM_1/10W_5%_ 0603	1	R41		
01-68359400-00-00	01 000	RES_CHIP_68K_OHM_1/10W_5%_ 0603	1	R16		
01-75059400-00-00	01 000	RES_CHIP_75_OHM_1/10W_5%_ 0603	1	R19		
Chip Ceramic Capacitors						
04-10115560-00-00	04 000	CAP_CHIP_100P_NPO_50V_5%_0603	2	C21,C22		
04-10330560-00-00	04 000	CAP_CHIP_103P_X7R_ 50V_10%_0603	1	C53		
04-10439560-00-00	04 000	CAP_CHIP_104P_X7R_50V_20%_0603	1	C18		
04-22330560-00-00	04 000	CAP_CHIP_223P_X7R_50V_10%_0603	1	C19		
04-47434260-00-00	04 000	CAP_CHIP_474P_X7R_16V_+80%_-20%_0603	2	C25,C26		
04-56330560-00-00	04 000	CAP_CHIP_563P_X7R_50V_10%_0603	1	C52		
04-82115560-00-00	04 000	CAP_CHIP_820P_NPO_50V_5%_0603	1	C54		
Electrolytic Capacitors						
02-10519028-00-00	02 000	ELECT_CAP_1UF/16V+/-20% -40+105'C (4X7MM)	2	C55,C56		
02-10719028-00-00	02 000	ELECT_CAP_100UF/16V+/-20% -40+105'C (5X11MM)	5	C23,C24,C,C30,C28		
02-47619028-00-00	02 000	ELECT_CAP_47UF/16V+/-20% -40+105'C (4X7MM)	1	C27		
Crystal Oscillator						
05-30500301-02-00	05-001	CERAMIC FILTER 500GF （滤波器）	1	Y1		
Tuner						
14-06080000-00-00		TCL TV TUNER M08TPT-PS-E	1	TUN1		NEW
WIRE						
54-01710006-00-00	54-042	TV CONECTOR PIN=8 L=1000MM (电视ISO线(1000MM))	1	连接TV盒与主机		
Transistor						
13-63875800-00-00	13-009	TR_CHIP_KTC3875S_SOT-23_NPN (ALY:120-240)	1	Q10		
13-71504800-00-00	13-008	TR_CHIP_KTA1504 SOT-23(ASY:120-240)	1	Q7		
13-71001900-00-00	13-011	TR_CHIP_KTA1001 SOT-89(KY:160-320)	1	Q9		
Inductors						
07-09101000-00-00	07-030	INDUCTOR CHIP 101UH 4x4x5mm +/-10% SMD	1	L7		
Connectors						
58-03020102-00-04	58-006	3.5插座 CK-3509B (电视天线插座)	2	ANT1,ANT3		
58-20080010-00-04	58-004	DS8-15 (电视ISO线插座)	1	CON1		
Ics						
09-17805300-01-00		IC_7805_TO-220_ST_金属散热片	1	ANT6		
09-17217300-00-00	09-018	IC_LA7217M(3034A-MFP14)	1	IC3		
PCB						
78-47100430-06-03		TV PCB FR4 H/H 1.0MM(KSD7100-06-03)	1	KSD7100-06-03		

TV盒					
KSD7100-R10-00		TV绝缘片_PC	TV-PCPLAT	1	TV盒
60-71001100-00-01		TV盒上盖_电解板0.8	TV-TOP	1	TV盒 ("HYUNDAI"logo)
60-71001210-08-00		TV盒下盖_电解板0.8 (2孔)	TV-BOTTOM	1	TV盒
PM2.0-4B		螺丝GB2.0*4PM(黑色)	screw	4	TV-BOT+TV-PCB(4),
KM2.0-4B		螺丝GB2.0*4KM(黑色)(小头)	screw	4	TV-TOP+TV-BOT(4)
PM3.0-8S		螺丝3.0*8PM(亮铬)	screw	1	TV-PCB
KSD7100-R11-00		螺母M3	nut	1	TV-PCB
41-01996603-00-00		EVA 3M胶纸 99*66*3.0双面胶	TV 盒	1	

OUR MODEL	KSD4300D	BUYER	H.Rangel	BUYER MODEL	H-CMD4001
MAIN FUNCTION	DVD/CD/CD/MP3/DVIX	DESTINATION	RUSSIA	BOM NO.	000-034300
LCD	4.3' TFT LCD	BRAND	Hyundai	PO NO.	PS08028
DVD DECK	FORYOU DL-30H LOADER	REMOCON	yes	QTY	3044
BAND	AM/FM/RDS/OIRT(东欧)	POWERCON	DVD ISO CONNECTOR CABLE	BOM REV:	V1.0 2008.08.21

MODEL:KSD4300D

POWER WIRE

400-03020307-0202(整体组件编码)

Part No		Value	Quantity	Location	Vender	Note
02-10819058-00-00	02 000	ELECT CAP 1000uF 16V+/-20% -40+105'C (10X17MM)	1	火牛板C1		
07-11601000-00-00	07-031	AMOS CORE AC-N001 (T18X11X10-600UH) (飞高)	1	火牛板 L1		
78-17100430-07-00		PCB KSD7100-07-00RDS 31X36X1.6MM	1	KSD7100-07-00		
54-00430040-01-00		20P POWER ISO CONNECTOR WIRE (DVD CONNECTOR CABEL B)	1			带火牛盒

PS08028-4300S with TV 包装BOM

OUR MODEL	KSD4300S with tv tuner and a	BUYER: Hyundai	BUYER MODEL: H-CMD4004		
MAIN FUNCTION	AM/FM/RDS/DVD/VCD/CD/M P3/MP4/SD /MMC-CARD	DESTINATION:	BOM NO: 402-PS08028-4300S-0822		
订单号码	PS08028-4300S		BOM REV: 1.0		
物料编号	名称	数量	位置	印刷备注	特别备注
82-43008028-HY-00	彩盒（HY）	1	包装	L230*W113*H350MM/350g灰卡+A9坑纸/四色印刷/过哑胶	新物料
83-43008028-HY-00	说明书	1	包装	A5尺寸/封面128g铜版纸, 单色印刷/内页80g书纸/骑马订	新物料
81-43008028-HY-00	卡通箱/一卡4	1	包装	L470*W360*H250MM/B=B坑纸/胶装/带客人型号H-CMD4006	新物料
33-43003003-HY-01	机器贴纸	1	机身	单色不干胶丝印黑色/90*90mm/客户提供	新物料
33-43002828-HY-00	主机流水码（不带条码）	1	机身	白色不干胶/黑色印刷/无边框	新物料
33-43002828-HY-01	彩盒卡通流水码（代跳马）	2	彩盒/卡通	白色不干胶/黑色印刷/无边框	新物料
33-35000631-HY-01	底壳警告贴纸/80*60MM	1	底壳	白色不干胶/红色印刷/英文及俄文	新物料
33-43002903-HY-00	卡通条码贴纸/50×20mm	1	卡通	贴于卡通/白色不干胶/丝印黑色字/无线框	旧物料
19-43000014-HY-00	遥控器	1	附件	黑色PVC/丝印银色/hyundai logo	旧物料
84-41050500-HY-00	HYUNDAI 客户保修卡	1	H-W400-3	200g双铜纸/210*148mm/单黑色双面印刷/过油	旧物料
84-43000400-HY-00	HYUNDAI 客户信息卡1	1	H-C400-2	80g书纸/210*148mm/单黑色印刷/骑马订	旧物料
KSD4000-P42-05	眼镜盒（HYUNDAI LOGO）	1	附件	174. 5x81. 2x36. 7/PP 黑色	旧物料
KSC102-B03-00	红色警示条/205×15mm/英俄文	2	机身	175g红色铜板纸/印刷黑色/单面过油/指定位置一端打孔	旧物料
33-00003803-HY-00	现代彩盒TITAN黑色圆点贴纸	3	彩盒/卡通2侧面	直径11mm/贴于彩盒/无印刷/黑色不干胶/表面过光胶	旧物料
86. 4000. 0000. 00	纸托	1 套		纸托, 左右各一	旧物料
86-10060225-HY-00	小内纸托1（TV机型）4000S带TV	1套	包装	L100xW60xH225MM/白九单坑/无印刷内容	旧物料
KSC101-B06-01	说明书PE袋	1	说明书	101通用（打孔）	旧物料
KSC101-B07-01	主机PE袋	1	主机	101通用（打孔）	旧物料
KSC101-B08-01	配件PE袋	2	配件	101通用（打孔）	旧物料
87. 4000. 0004. 00	面板PE袋	1	面板	275*130/有环保标志（打孔）	旧物料
KSC101-B08-15	配件PE袋2	1	配件	101通用（装螺丝用, 长17. 5CM, 宽11. 5CM）	旧物料
KSD4000-R10-00	海绵	2	眼镜盒		旧物料
KSD4000-R11-00	海绵	6	眼镜盒	34x12x12mm/黑色海绵	旧物料
KSC-101-M12-00	取机匙(电解板) 130*30*1. 5	2	附件	101通用	旧物料
KSC-101-M13-00	多孔铁板(电解板) 150*15*1	1	附件	101通用	旧物料
KSC-101-R54-00	尾柱胶粒	1	附件	101通用	旧物料
	尾部螺栓	1	附件	附件101通用 8粒螺丝(见结构BOM)	
	防潮珠	1	附件		
57-35000991-01-00	TV天线（2路）	1	附件	附件(HYUNDAI)	旧物料

拟制:

日期:

批准:

日期: